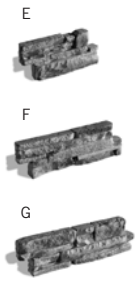


Esplanade® Tandem® Wall



Esplanade® Tandem® Wall – 180 mm Veneer Unit

	Dimensions (mm)	Dimensions (in)
E	180 x 60 x 350	7 1/16 x 2 3/8 x 13 3/4
F	180 x 60 x 495	7 1/16 x 2 3/8 x 19 1/2
G	180 x 60 x 562	7 1/16 x 2 3/8 x 22 1/8
Weight/unit (avg.)	9 kg	19 lbs
Area/layer	2.53 m ²	27.25 ft ²
Area/cube	5.06 m²	2 Rows 54.50 ft²
Length/layer	14.07 lin. m	46.16 lin. ft
Length/cube	28.14 lin. m	92.32 lin. ft
Qty of set/layer	5 sets of 6 units	
1 set ^{(1) (2)}	0.50 m ²	5.45 ft ²
Weight/cube	538 kg	1184 lbs



Colours

Codes	Colours
16200516	Range Amboise Beige**
16200515	Range Margaux Beige**
16200514	Range Newport Grey**

⁽¹⁾ 1 set = 2 units of E, 2 units of F, 2 units of G

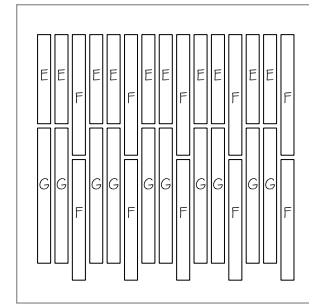
⁽²⁾ A set of Esplanade Tandem Wall – 180 mm Veneer unit = 2 sets of Tandem Wall System 180 mm structural unit

Can be double stacked.

Non returnable pallet.

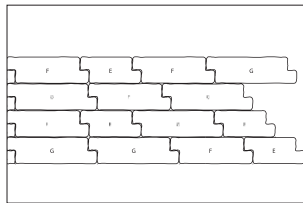
**Products available while supplies last.

Typical row



Units packaged vertically

Laying Patterns



LINEAR PATTERN WITH
ESPLANADE TANDEM 180 UNITS ONLY

Notes

Recommended Capping Modules : Esplanade 42 in Chiseled Capping module

Applications : Retaining wall (by using 180 mm structural units) ■ Double-sided wall (by using double-sided concrete or plastic connector) ■ Pillars (by using 180 mm structural units)

Additional details specific to this product are available by consulting our landscaping installation guide on our website.