

PERMACON



2023 Architectural Masonry Products



Leader for over 70 years

Committed to offering friendly local service and reducing its carbon footprint, the local production of concrete products remains a priority for Permacon.

For over 70 years, Permacon has been passionately reinventing masonry products and remains the leading manufacturer of concrete products in Canada. The enviable reputation we have built is reflected in the exceptional quality of our products, as well as in the solid relationship of trust we maintain with our partners and customers.

Think bigger

In its nine manufacturing plants in Quebec and Ontario, Permacon manufactures state-of-the-art products that stand out and exceed the expectations of the most demanding customers. Permacon is also the supplier of choice for architects and contractors who want exceptional quality and environmentally responsible products.

Think further

Whether it's redefining the concrete products industry or implementing best practices, Permacon consistently leads the way. We set trends and bring innovations to life.



20 Stone

- 22 Aria
- 24 Dominion
- 26 Lafitt Alto
- 28 Lafitt
- 30 Lamina
- 32 Lexa
- 34 Lineart
- 36 Maestro
- 38 Mondrian

40 Brick

- 42 Cardin
- 44 Cinco Plus
- 46 Melville Norman
- 48 Melville Slik

50 Miscellaneous

- 51 Accessories
- 52 Technical information
- 53 Tools
- 54 Warranty

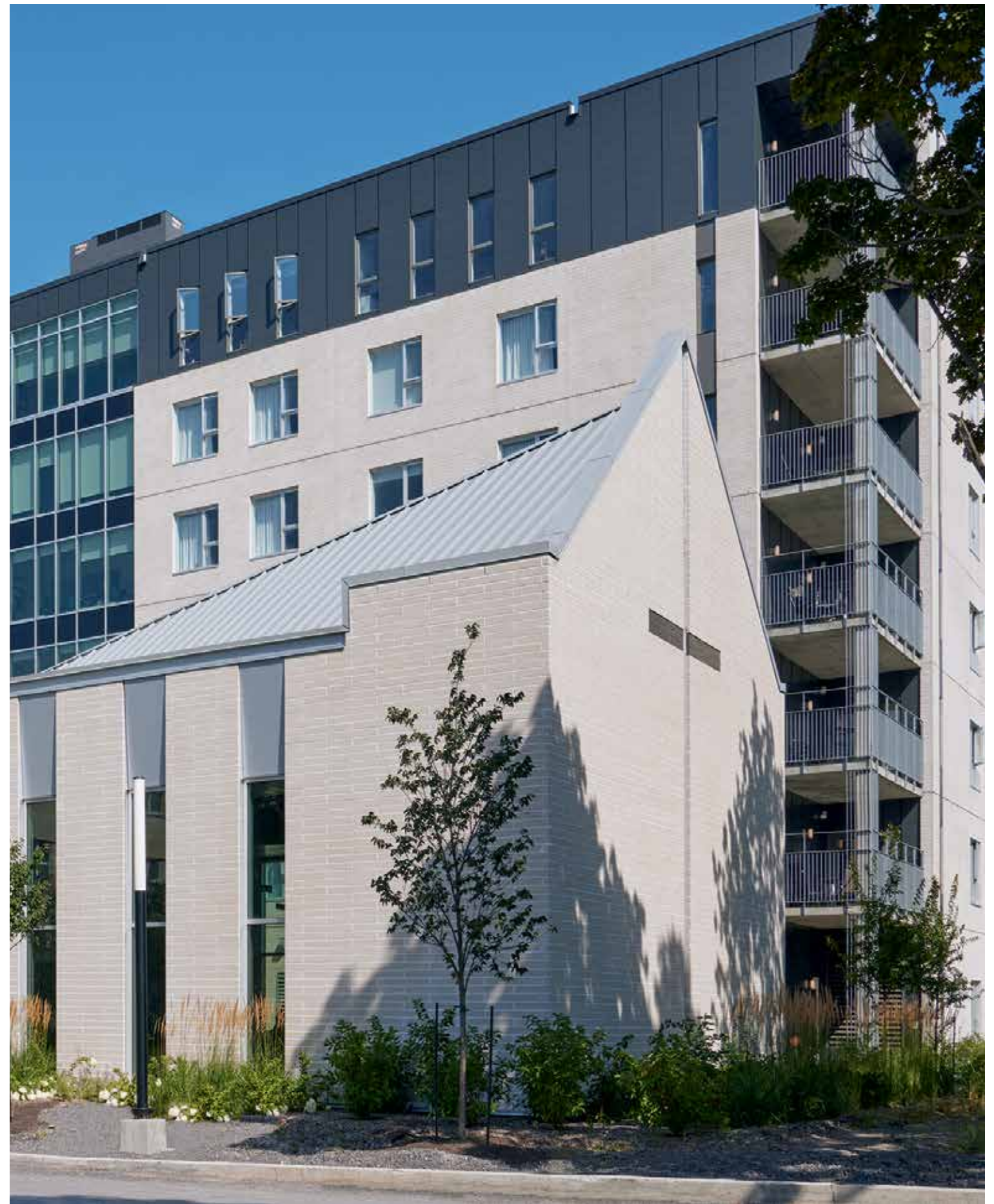
PLEASE NOTE: The colours of the products shown in this catalogue are as accurate as the photographs and printing process will allow. Since all Permacon products are made from natural materials, such as sand and stone that may change over time, colour and texture variations are to be expected. We strongly recommend that you make your final colour selection based on a current product sample rather than existing projects or the photographs shown here.

Get inspired by our
concrete products
to create unique and
distinctive architectural
projects.

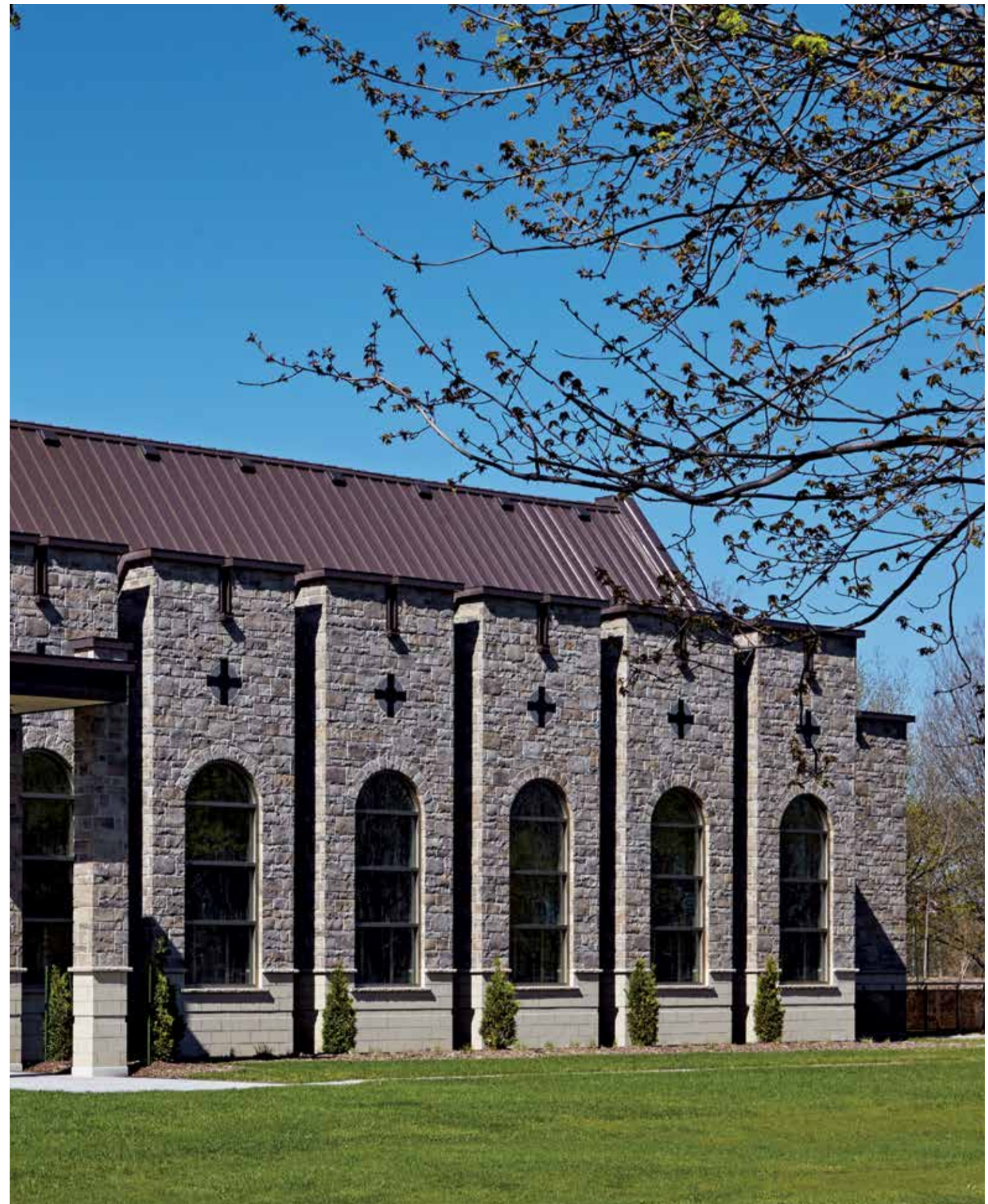
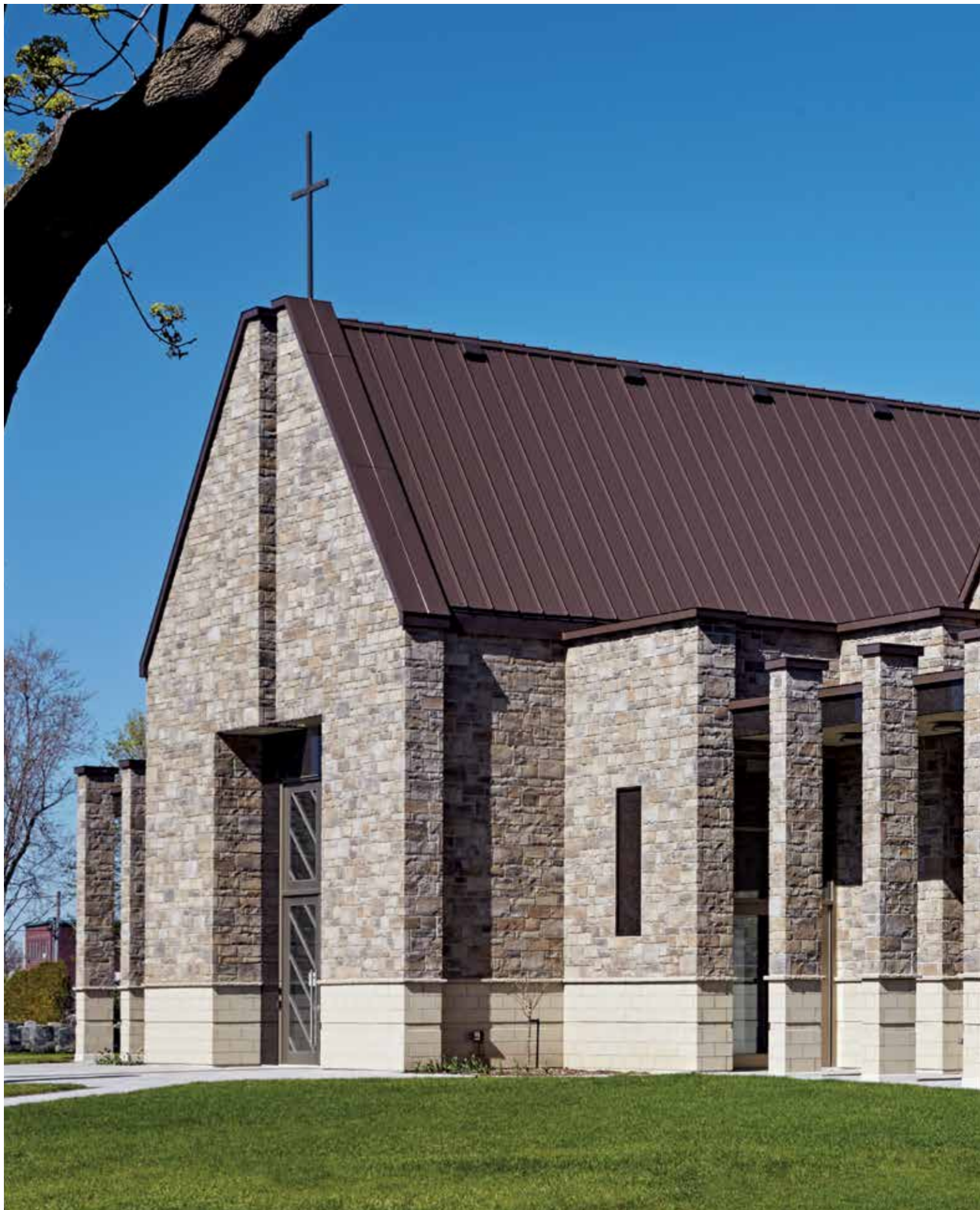


→
Aria Stone
Heron P 22







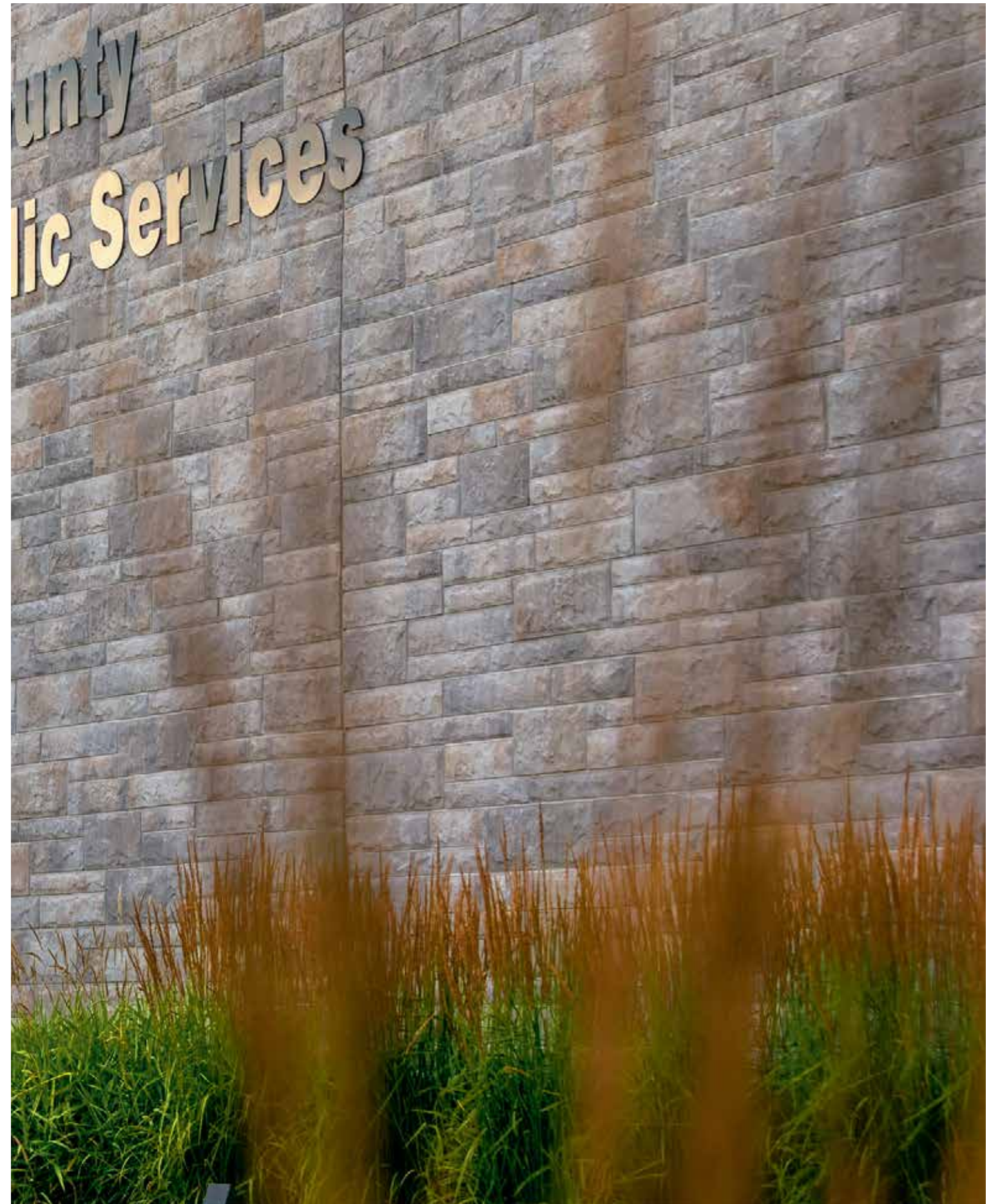


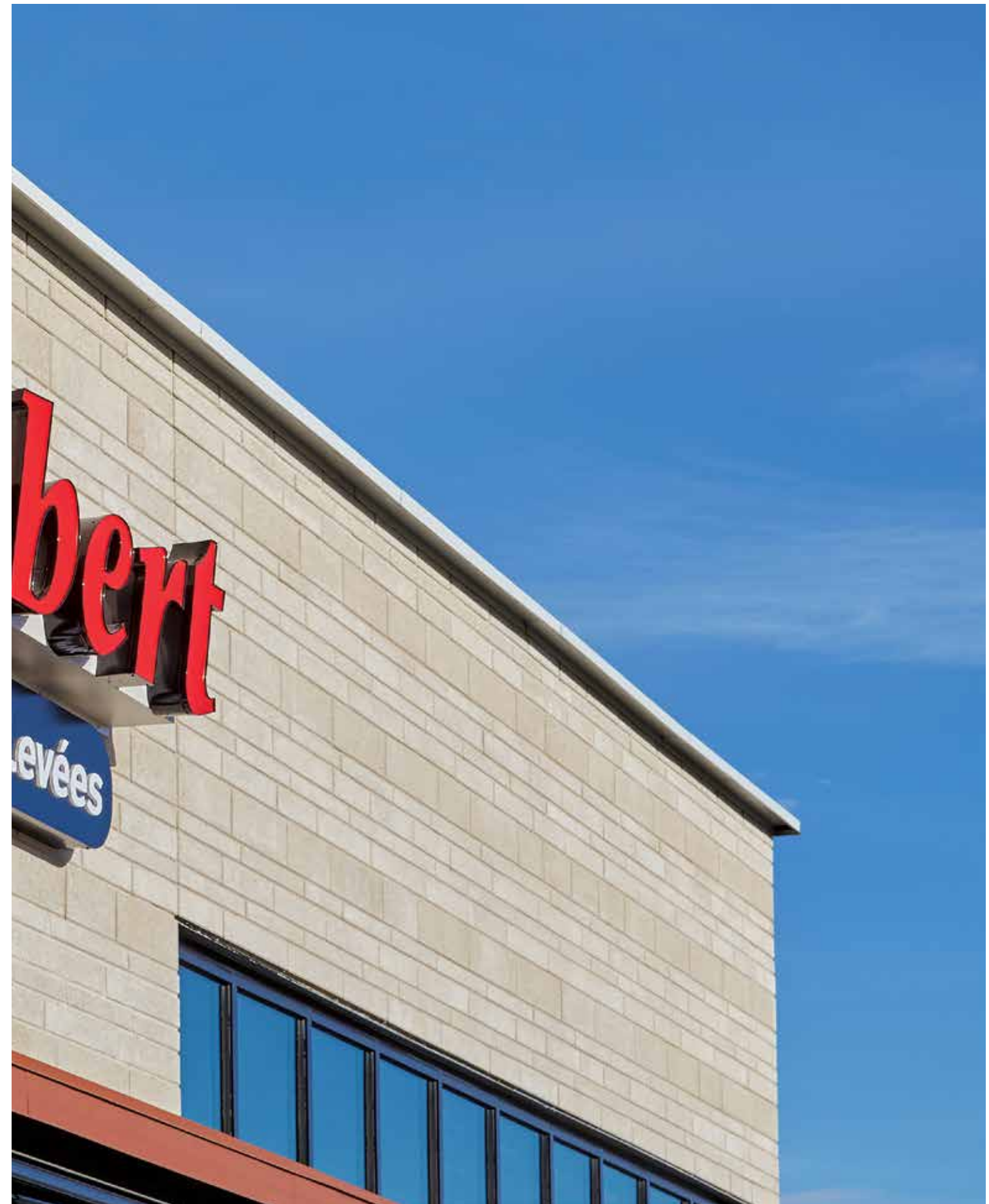


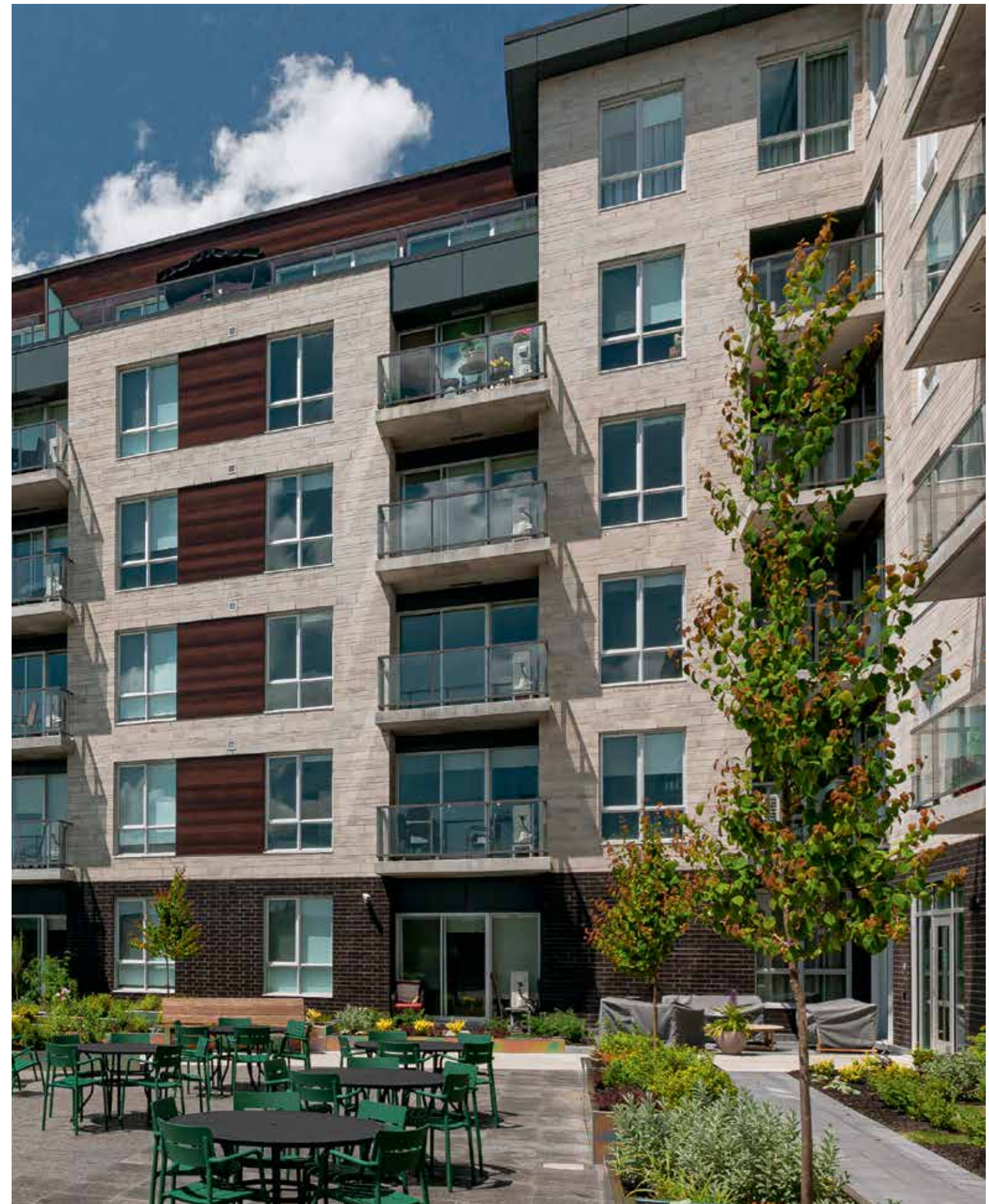
↑ **Mondrian Stone**
Range Scandina Grey P 38



↑ **Lafitt Stone**
Rockland Black P 28

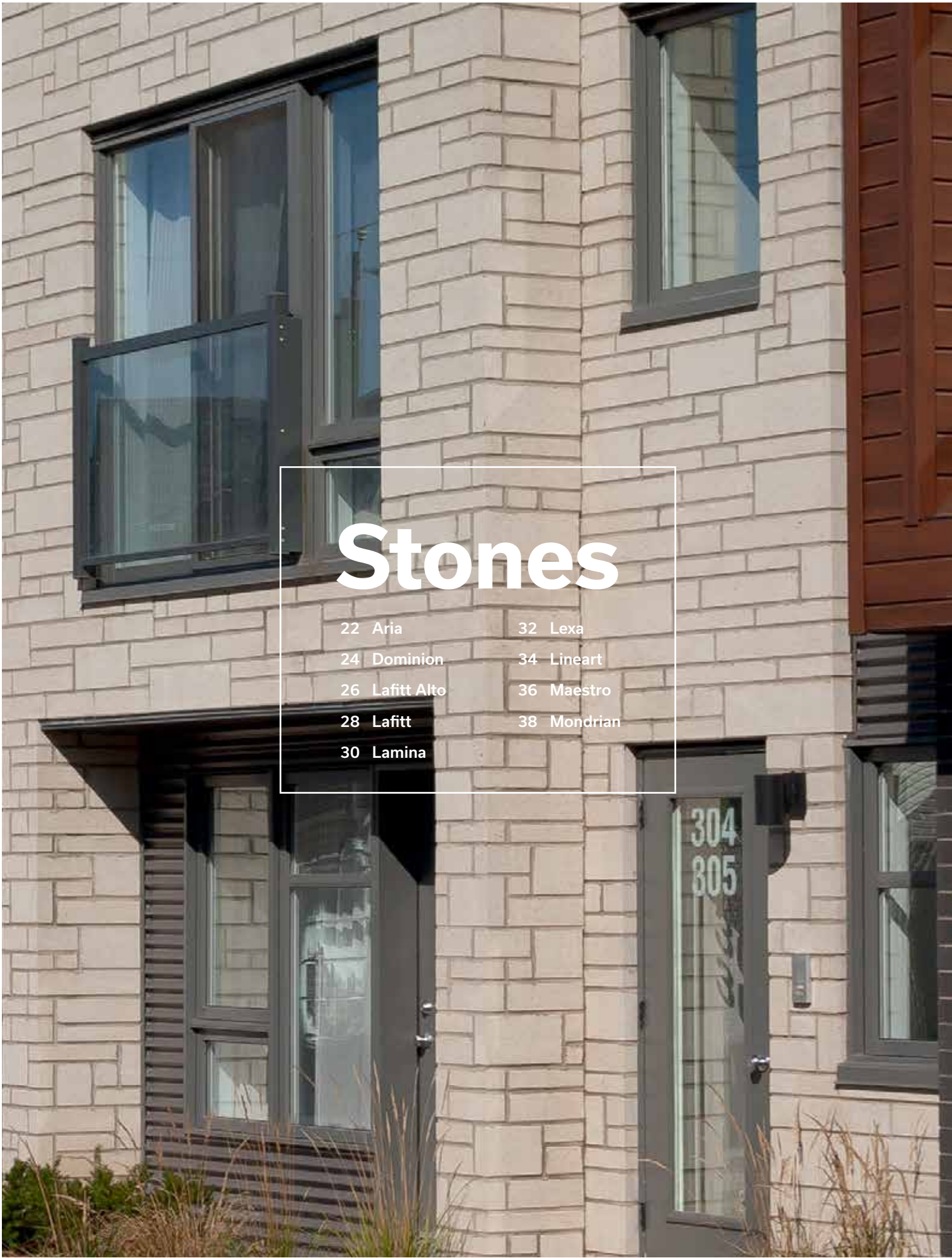








Permacon stones set the standard for masonry products. You will be delighted by their natural colours and textures inspired by master masons' stonework.



Stones

- | | |
|----------------|-------------|
| 22 Aria | 32 Lexa |
| 24 Dominion | 34 Lineart |
| 26 Lafitt Alto | 36 Maestro |
| 28 Lafitt | 38 Mondrian |
| 30 Lamina | |



Aria Stone



Blizzard



Heron

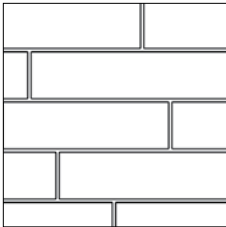


Range **Newport Grey**

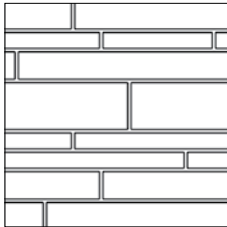


Rockland Black

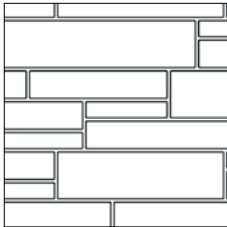
Laying Patterns



Linear - Large Stones



Linear Mix



Modular Mix



Dominion Stone



Enhances any project with its distinctive appearance and timeless appeal.



Limestone

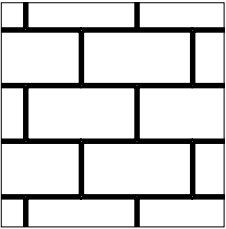


Graphite

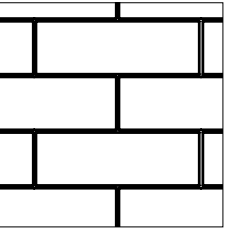


Milano

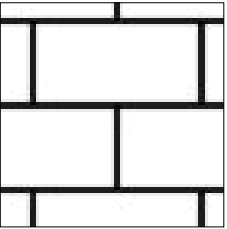
Laying Patterns



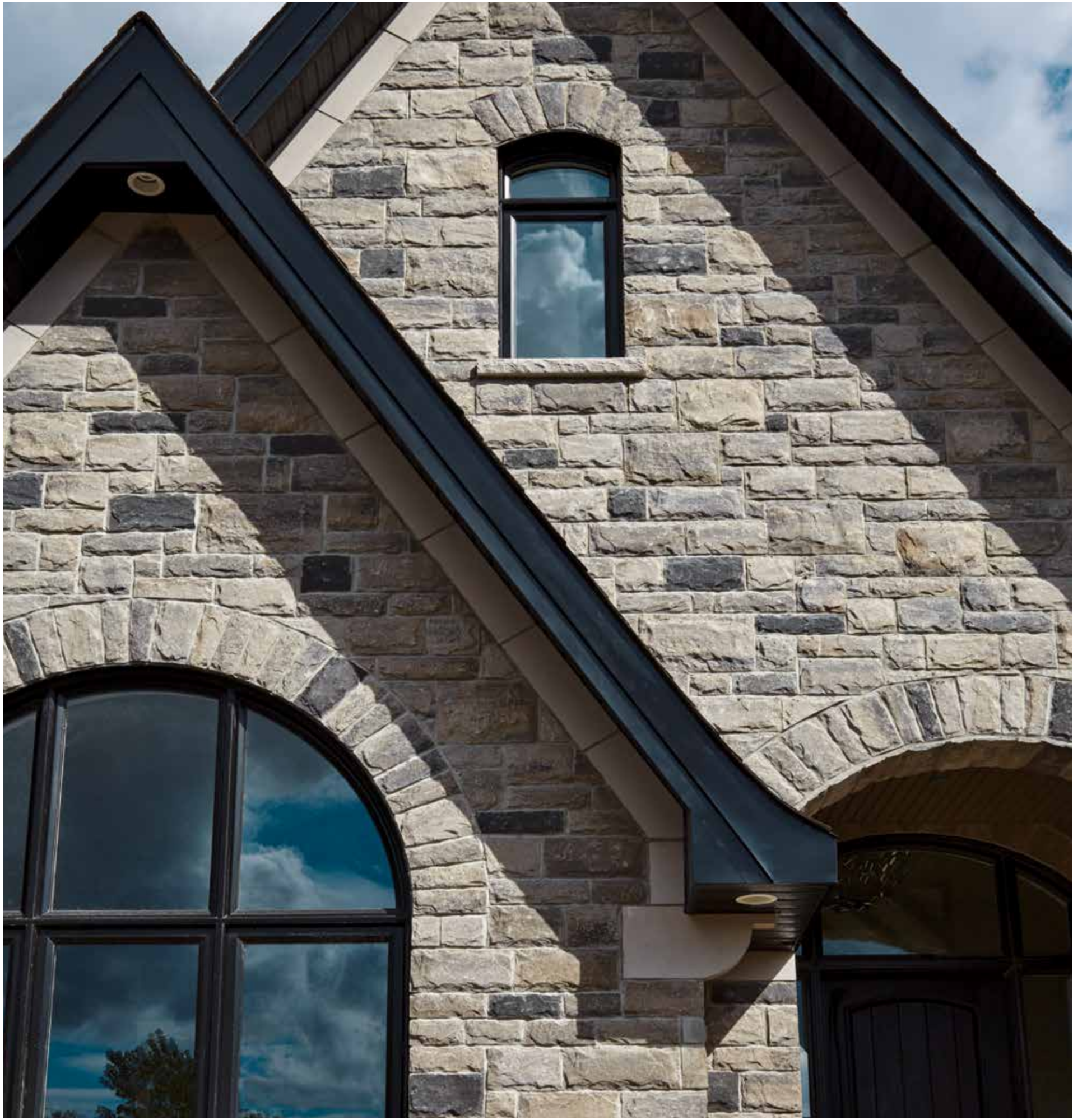
Linear
8 in. x 16 in.



Linear
8 in. x 24 in.



Linear
12 in. x 24 in.



Lafitt Alto Stone



Range **Margaux Beige**



Range **Chambord Grey**



Range **Newport Grey**

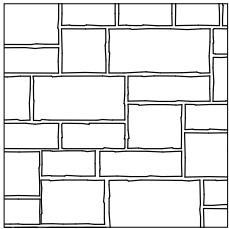


Range **Scandina Grey**

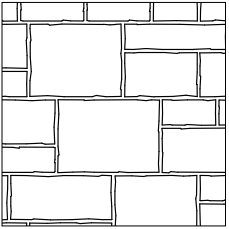


Rockland Black

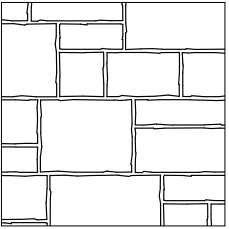
Laying Patterns



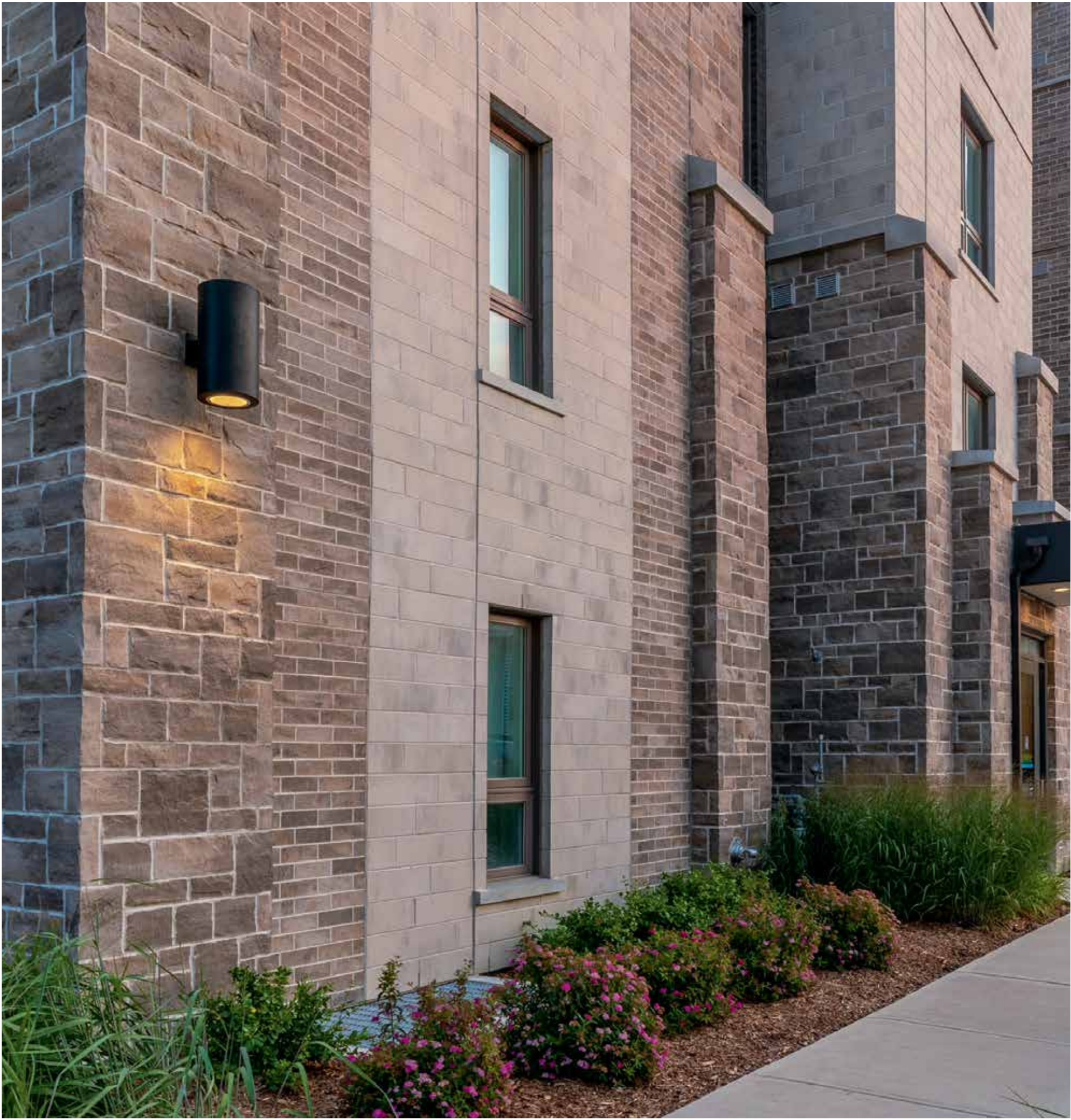
Modular
10% Large Stones



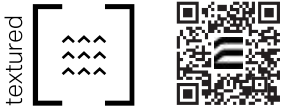
25% Large Stones



50% Large Stones



Lafitt Stone



Blizzard



Range Amboise Beige



Range Margaux Beige



Range Newport Grey



Range Scandina Grey



Range Chambord Grey

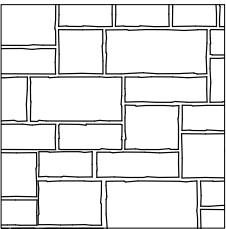


Rockland Black

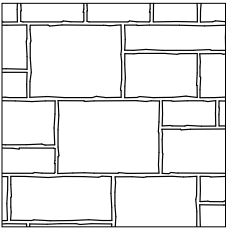


Oasis

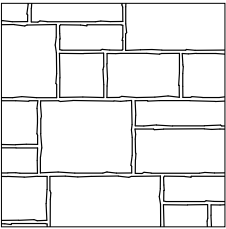
Laying Patterns



Modular
10% Large Stones



25% Large Stones



50% Large Stones



Lamina Stone



Range **Margaux Beige**

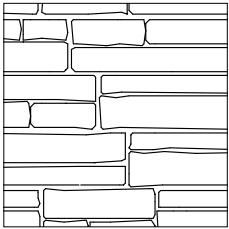


Range **Newport Grey**

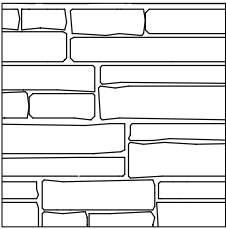


Rockland Black

Laying Patterns



Running Bond



20% Large Stones



Lexa Stone



Cameo Beige

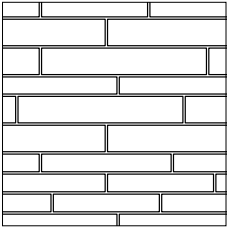


Alpine Grey

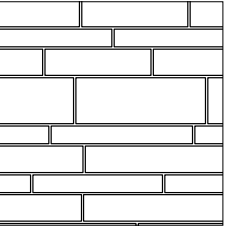


Rockland Black

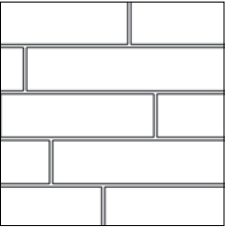
Laying Patterns



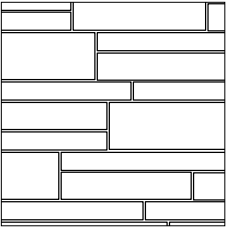
Linear
Small/Medium Stones



Linear
33% Large Stones



Linear
100% Large Stones



Modular
33% Large Stones



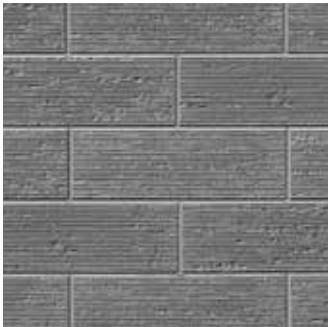
Lineart Stone



- Unique striated finish inspired by ancient stone carving methods
- Matching corners included on 50% of the stones



Cameo Beige

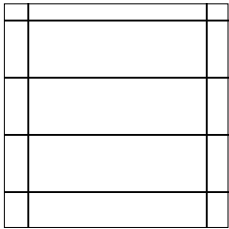


Sterling Grey

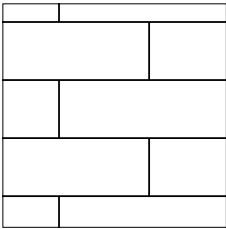


Rockland Black

Laying Patterns



Stack Bond



Running Bond



Maestro Stone



- ↳ Fully finished corners
- ↳ Perfect match to Melville Pavers and Slabs



Cameo Beige

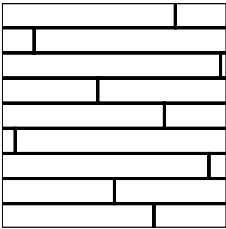


Sterling Grey



Rockland Black

Laying Pattern



Linear
Random Coursed



Mondrian Stone



- Allows for a modular or linear installation
- Matches perfectly with our landscaping products, including Trafalgar Paver, Mondrian Pavers and Slabs



Blizzard



Range **Amber Beige**



Range **Margaux Beige**

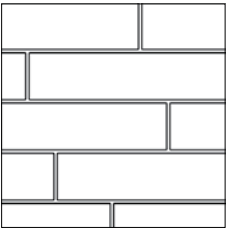


Range **Newport Grey**

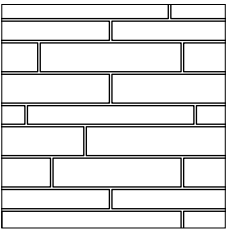


Range **Scandina Grey**

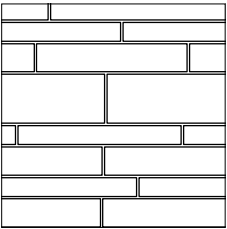
Laying Patterns



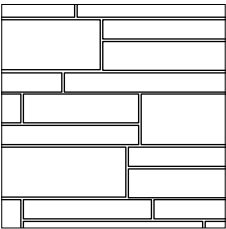
Linear
Large Stones



Linear
Medium/Small Stones



Linear
Large/Medium/Small
Stones



Modular
Large/Medium/Small
Stones



Whether they are modern, traditional or country style, Permacon bricks will enhance your architectural projects.



Bricks

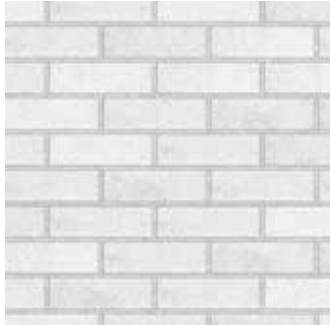
42	Cardin	46	Melville Norman
44	Cinco Plus	48	Melville Slik



Cardin Brick

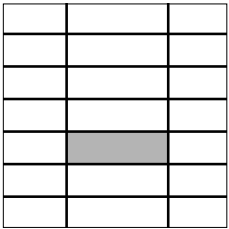


- Solid brick unit
- Corner unit on each brick
- Optimised format for cost effectiveness (material and labour)

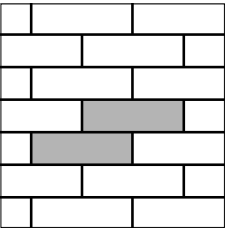


Blizzard

Laying Patterns



Stack Bond



Running Bond



Cinco Plus Brick



Range **Margaux Beige**



Range **Chambord Grey**



Range **Grey and Black**



Range **Lennox Grey**



Range **Newport Grey**



Range **Scandina Grey**



Rockland Black



Cinco Plus Stone



Range **Margaux Beige**



Range **Chambord Grey**

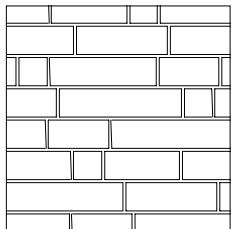


Range **Newport Grey**



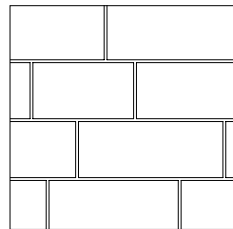
Range **Scandina Grey**

Laying Pattern - Brick

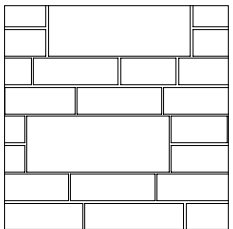


Cinco Plus Brick
Running Bond

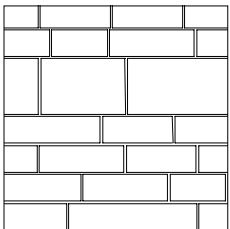
Laying Patterns - Stone



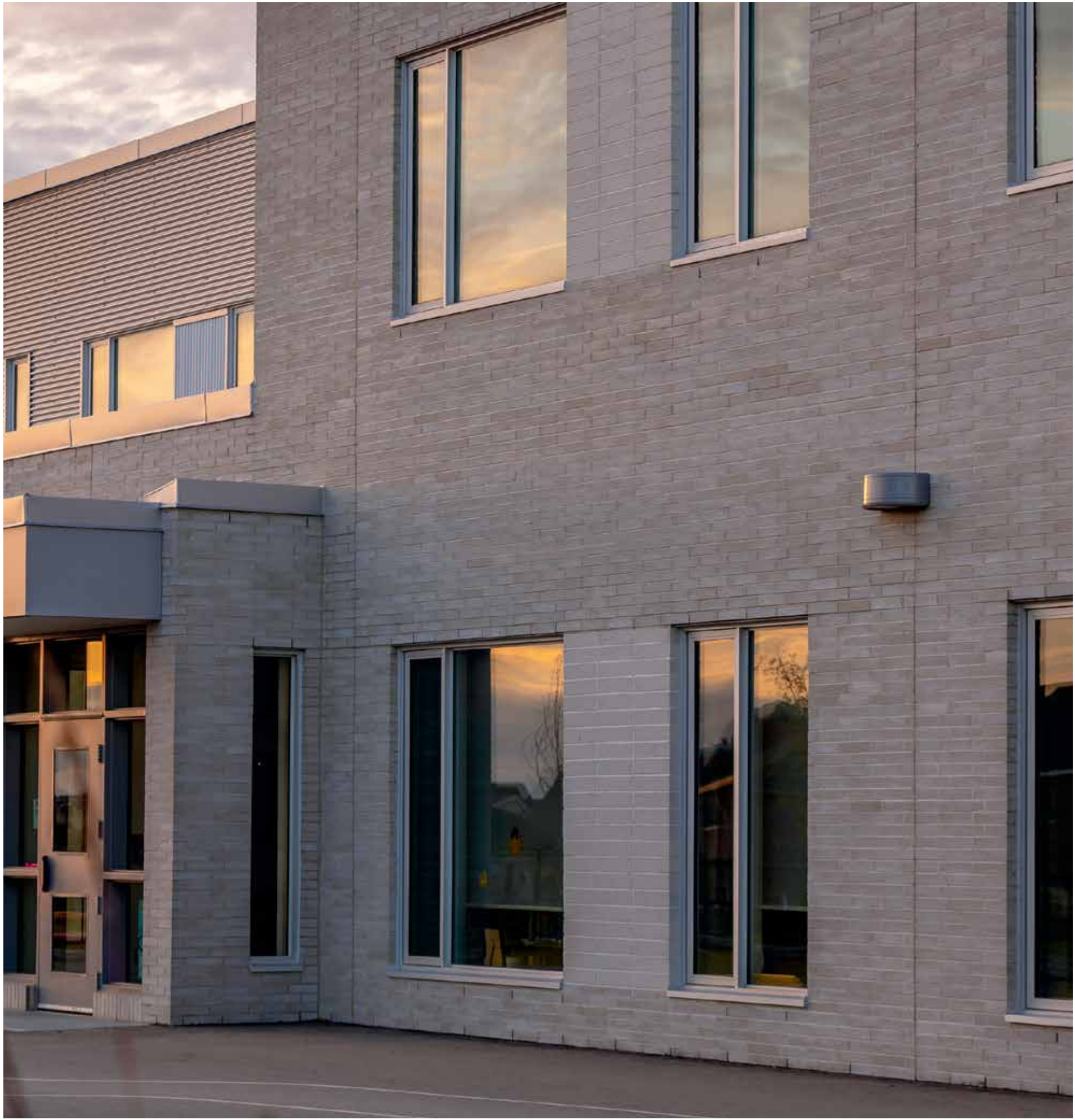
Cinco Plus Stone
Linear Irregular



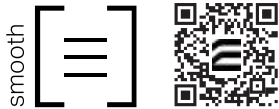
Cinco Plus Stone
Modular Irregular
with Cinco Brick



Cinco Plus Stone Linear
Irregular with Cinco Brick



Melville Norman Brick



- Thin, elongated format (300 mm nominal)
- Precise dimensional stability through a manufacturing process that prevents warping
- Cores in the brick make it easier to install and provide increased mortar adhesion



Alpine Grey

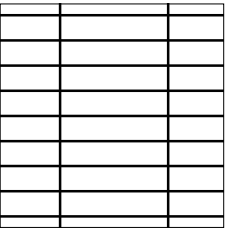


Sterling Grey

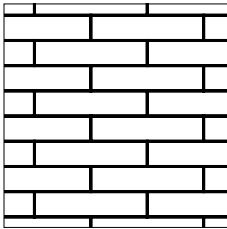


Rockland Black

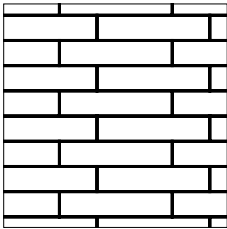
Laying Patterns



Stack Bond



Running Bond



1/3 Bond



Melville Slik Brick



Range **Amber Beige**



Range **Margaux Beige**



Cameo Beige



Alpine Grey



Range **Chambord Grey**



Range **Newport Grey**



Range **Scandina Grey**



Sterling Grey

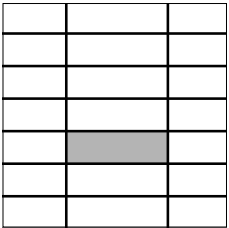


Range **Vintage Brown**

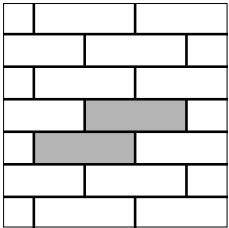


Rockland Black

Laying Patterns



Stack Bond



Running Bond

Accessories

Dominion Reversible Window Sill



Limestone

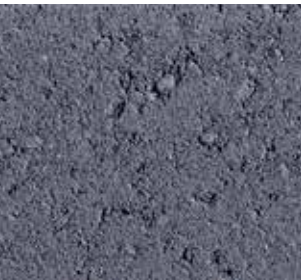
Cardiff Window Sill - Smooth



Smooth Off-White



Smooth Sterling Grey



Smooth Rockland Black

Cardiff Window Sill - Chiselled



Chiselled Off-White



Chiselled Rockland Black

Technical Information for Stone, Brick and Accessories

Aria Stone

90 x 60 mm x var.	3 1/2 x 2 3/8 in. x var.	A
90 x 102 mm x var.	3 1/2 x 4 in. x var.	B
90 x 172 mm x var.	3 1/2 x 6 3/4 in. x var.	*C

Mix pallet made up of A, B and C units.

* Sold Separately

Cinco Plus Stone

90 x 196 mm x var.	3 1/2 x 7 23/32 in. x var.	
--------------------	----------------------------	--

Dominion Stone

90 x 190 x 390 mm	3 1/2 x 7 1/2 x 15 3/8 in.	*A
90 x 190 x 590 mm	3 1/2 x 7 1/2 x 23 1/4 in.	*B
90 x 290 x 590 mm	3 1/2 x 11 7/16 x 23 1/4 in.	*C

Graphite and Milano colours are available in B and C units only.

* Sold Separately

Lafitt Alto Stone

90 x 102 mm x var.	3 1/2 x 4 in. x var.	A
90 x 178 mm x var.	3 1/2 x 7 in. x var.	B
90 x 292 mm x var.	3 1/2 x 11 1/2 in. x var.	*C

* Sold Separately

Lafitt Stone

90 x 102 mm x var.	3 1/2 x 4 in. x var.	A
90 x 178 mm x var.	3 1/2 x 7 in. x var.	B
90 x 292 mm x var.	3 1/2 x 11 1/2 in. x var.	*C

* Sold Separately

Lamina Stone

90 x 95 mm x var.	3 1/2 x 3 3/4 in. x var.	
-------------------	--------------------------	--

Lexa Stone

90 x 76 mm x var.	3 1/2 x 3 in. x var.	A
90 x 114 mm x var.	3 1/2 x 4 1/2 in. x var.	B
90 x 198 mm x var.	3 1/2 x 7 13/16 in. x var.	*C

* Sold Separately

Lineart Stone

90 x 194 x 600 mm	3 1/2 x 7 5/8 x 23 5/8 in.	
-------------------	----------------------------	--

Maestro Stone

90 x 90 x 890 mm	3 1/2 x 3 1/2 x 35 in.	
------------------	------------------------	--

Mondrian Stone

90 x 76 mm x var.	3 1/2 x 3 in. x var.	A
90 x 114 mm x var.	3 1/2 x 4 1/2 in. x var.	B
90 x 198 mm x var.	3 1/2 x 7 13/16 in. x var.	*C

* Sold Separately

Cardin Brick

90 x 79 x 257 mm	3 1/2 x 3 1/8 x 10 1/8 in.	
------------------	----------------------------	--

Cinco Plus Brick*

90 x 92 mm x var.	3 1/2 x 3 5/8 in. x var.	
-------------------	--------------------------	--

* Range Grey and Black, Range Lennox Grey and Rockland Black are not available in the Greater Toronto area

Melville Norman Brick

90 x 57 x 290 mm	3 1/2 x 2 1/4 x 11 7/16 in.	
------------------	-----------------------------	--

Melville Slik Brick

90 x 79 x 257 mm	3 1/2 x 3 1/8 x 10 1/8 in.	A
90 x 79 x 257-212 mm	3 1/2 x 3 1/8 x 10 1/8-8 3/8 in.	B

Dominion Window Sill

145 x 75 x 914 mm	5 11/16 x 3 x 36 in.	
-------------------	----------------------	--

Cardiff Smooth Window Sill

150 x 79 x 948 mm	5 7/8 x 3 1/8 x 37 3/8 in.	
-------------------	----------------------------	--

Cardiff Chiselled Window Sill

150 x 79 x 948 mm	5 7/8 x 3 1/8 x 37 3/8 in.	
-------------------	----------------------------	--

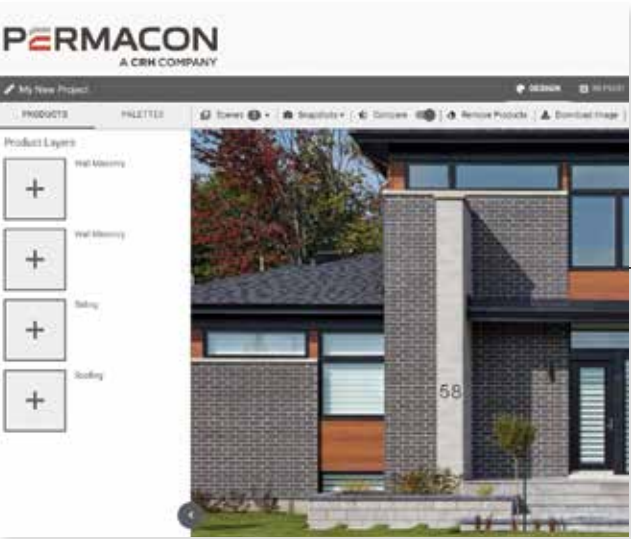
A unique experience for professionals



As the leading Canadian manufacturer of masonry products, Permacon is a trusted partner that understands the challenges faced by professionals and supports them in carrying out their most ambitious projects.

We have partnered with BIMsmith—offering the leading free online product search platform for building professionals—to help you integrate Permacon products into your design software and combine them more easily.

With the Permacon BIM library, you will have access to a wide range of technical information and be able to search, configure and download BIM objects for our masonry products. You can also use BIMsmith Forge, a tool that allows an easy configuration of complete assemblies. Create your project from scratch or choose from one of our assembly model to save time! The other professional tools we have developed are available on SketchUp, AutoCAD, Autodesk and other commonly used 3D design and rendering software.



Warranty

Masonry Products for Institutional, Commercial and Industrial Use

Permacon’s warranty applies to landscaping and masonry products including Suretouch intended for institutional, commercial and industrial use¹. This warranty statement affirms that products manufactured by Permacon meet the requirements of the Canadian Standard Association (CSA) and American Society for Testing and Materials (ASTM).

Permacon guarantees that, as of the date of delivery, our concrete products are free from manufacturing defects. Provided the conditions set forth below are met, Permacon guarantees the structural integrity of the concrete in its landscaping products for a period of 5 years from the date of purchase of the product. The masonry products will be guaranteed for a period of 50 years. The warranty applies to normal, non-abusive use of the product.

IN ALL CASES DETAILED BELOW, THE WARRANTY IS LIMITED TO THE PRODUCTS’ MARKET VALUE.

How do I make a claim?

 permacon.ca/en/warranty/



Proof of purchase will be required to proceed with a claim request. No claims will be accepted without proof of purchase.²

All claims must be reported within 15 days of the discovery of a product’s defect. To validate a claim, a Permacon representative will arrive to inspect the defective products in order to confirm whether the claim is admissible. Therefore, it is essential to provide Permacon with the necessary access to inspect and take photos of the products in question.

This warranty is the only one that is presently offered. Because Permacon continually improves and modifies its products, it may alter and discontinue products at any time, and therefore may replace warranty-covered products with products of similar quality or offer monetary compensation if the products under warranty have been discontinued or are no longer on the market while the warranty is active.

In the event that a product is found to be non-conforming by Permacon or an authorized representative of the company, and in order to proceed with compensation, Permacon will take into account the number of months

during which the landscaping or masonry products were in the possession of the owner or their contractor, up to the date of the claim, and will prorate the amount of the payment or replacement to be made accordingly.

For example: if the purchaser makes a warranty claim in the last month of the 2nd year of the warranty (i.e., the 24th month), the manufacturer, at its sole discretion, shall either :

- Provide a replacement for the product in question if still available (only the defective product will be replaced)
- Return 36/60 of the price paid for the products to the owner. No labor, transportation, or other compensation costs will be covered by Permacon.

Transferability

The warranty is transferable. Proof of warranty registration will still be required in the event of a claim. The prorated period will be based on the warranty period remaining as an assignee, if the purchaser transfers the limited warranty to a subsequent owner, as described above.

Exclusions

A landscaping or masonry product installed on an area of more than **100 square feet** confirms the acceptance of the product received on site and that no claim can be made to Permacon regarding the colour, size, or texture of the product.

This limited warranty excludes all products not supplied by Permacon, as well as any defects, failures, or damages that may result from the actions listed below:

- Contact with chemicals or cleaning products
- Damage caused by pressure washers
- Improper installation or other construction activities that do not comply with the installation standards established by ICPI, NCMA or IMQ, the National Building Code or the installation methods and tips recommended by Permacon. The installation guides provided by Permacon represent certain installation situations and are not exhaustive. It is therefore strongly recommended that you consult a qualified professional to ensure the proper installation of Permacon products on a specific job site.
- Defective design or construction resulting in sagging, shifting, or failure
- Breakage due to shock, impact, or excessive load during handling, use, or transportation
- Natural disaster or other uncontrollable event
- Breakage and damage to products caused by soil movement or building movement as well as misuse of construction, compaction, or snow removal equipment. The warranty does not cover surface deterioration caused by the misuse of sodium chloride (NaCl) to de-ice pavers, slabs, or steps.
- The use of sodium chloride (NaCl) on the following product: Valentia Step
- Be.OnStone and Mirage products sold by Permacon

Installation

When installing masonry products, it is vital that the work be cleaned to remove residue and contaminants left on the stone or brick. Permacon accepts no responsibility for stains and colour changes caused by installation residue or the consequences of cleaning said residue.

Colour

The presence of natural ingredients used in the manufacturing process varies from one product to another. Therefore, the product received on the job site will not be completely identical to the products presented in our commercial presentations (catalogs, samples, displays). Any difference in colour cannot be attributed to the guarantee.

Photos of our products in landscape and masonry brochures, as well as in displays such as masonry panels and landscape racks at our distributors, are not an exact representation of the products that will be delivered to the job site. Permacon offers a variety of products with different colours to reproduce the appearance of natural stone. It is therefore strongly recommended that you view several products directly from your authorized Permacon distributor to see all available colours.

It is the purchaser’s responsibility to approve the products delivered to the job site prior to installation and to ensure that the colour is satisfactory. It is also recommended to mix products from different pallets received on site. Since variations in colour shades are a natural phenomenon, Permacon does not guarantee colour uniformity between different pallets on the same job site. Product installation constitutes acceptance.

Polymeric film

A whitish polymeric film can be found on the surface of our products. This is the result of an inadequate use of polymeric sand. Improper cleaning of slabs and pavers prior to the application of water on the products’ surface can cause this whitish polymeric film. This film does not affect the structural integrity of the product. Permacon cannot be held responsible for this phenomenon, which is not covered by the warranty.

Efflorescence

White traces on the surface of the product are caused by a natural phenomenon called efflorescence. More visible on darker products, efflorescence affects neither the intrinsic technical qualities nor the structural integrity of our products. The possible appearance of efflorescence cannot be the subject of any guarantee on our part. In most cases, efflorescence disappears by itself over time.

¹ The following areas are defined as institutional, commercial and industrial: public areas, businesses, family dwelling of six units or more, and all other non-residential areas

² The following documents are considered valid proof of purchase: an invoice from an authorized Permacon distributor or an invoice from a landscape contractor, general contractor, or mason



Consult your PERMACON REPRESENTATIVE
for more information.



permacon.ca

1 888 PERMACON

PERMACON
A CRH COMPANY