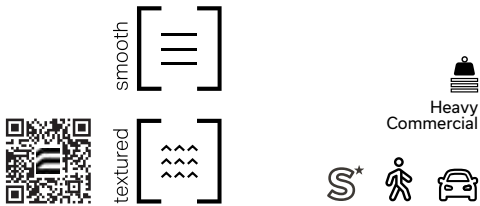


Boulevard TLI 90 Paver



smooth [≡]	Colour	
	White - Smooth	
	Cinder Grey - Smooth	
	Charcoal - Smooth	
	Light Charcoal - Smooth	
	Black ETX - Smooth	
	Light Grey - Smooth	
	Beige Grey - Smooth	
	Beige - Smooth	

textured [≡≡≡]	Colour	
	Cinder Grey - Granitech	
	Light Charcoal - Granitech	
	Charcoal - Granitech	
	Light Grey - Granitech	
	Beige Grey - Granitech	
	Beige - Granitech	
	Opal White - Granitech	
	Stanstead Grey - Granitech	
	Cambrian Brown - Granitech	
	Cambrian Black - Granitech	

160 x 240

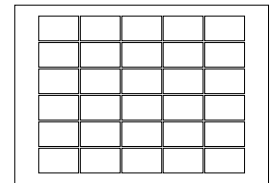


	Dimensions mm	Dimensions in.
A	90 x 160 x 240	3 1/2 x 6 5/16 x 9 1/2
Unit/area	26 units/m ²	2.42 units/ft ²
Cube ft ²	86.8	12.4 per row

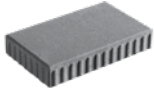
Mass/ft ²	22.33 kg	49.13 lb
Mass/ft ²	23.63 kg	51.99 lb
Mass/ft ²	28.83 kg	63.40 lb

Sold separately

Typical Row



320 x 520

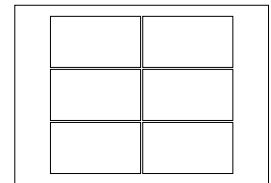


	Dimensions mm	Dimensions in.
B	90 x 320 x 520	3 1/2 x 12 5/8 x 20 23/48
Unit/area	6 units/m ²	0.56 unit/ft ²
Cube ft ²	86	10.75 per row

Mass/ft ²	22.33 kg	49.13 lb
Mass/ft ²	23.63 kg	51.99 lb
Mass/ft ²	28.83 kg	63.40 lb

Sold separately

Typical Row

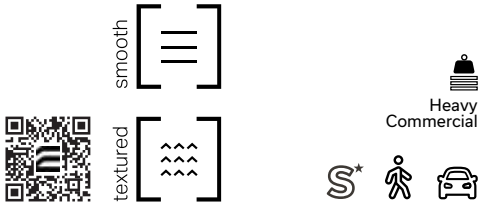


TECHNICAL INFORMATION

Product	Standard	Flexural Strength	Compressive Strength	De-icing salts freeze-thaw durability	Density	Absorption	Dimension Tolerance*
Boulevard TLI 90 Paver 160 x 240 320 x 520	CSA A231.2	N/A	μ 50 MPa ≥ 45 MPa	225 g/m ² after 28 cycles 500 g/m ² after 49 cycles	N/A	N/A	Length: -1.0 to +2.0 mm Width: -1.0 to +2.0 mm Height: ±3.0 mm

Setting of joint-filling sand: Cover the vibrating plate with a removable rubber tread (neoprene or polypropylene). Cover the snow removal tools with Teflon or neoprene protectors to minimize the risk of damage from scratches or concrete shards. Laying patterns: These laying patterns are by way of example only and represent only a few of many possibilities. Permacon shall not be responsible for the excess or shortage of pavers resulting from installation according to these laying patterns.

Boulevard TLI 100 Paver



smooth	Colour
	White - Smooth
	Cinder Grey - Smooth
	Charcoal - Smooth
	Light Charcoal - Smooth
	Black ETX - Smooth
	Light Grey - Smooth
	Beige Grey - Smooth
	Beige - Smooth

textured	Colour
	Cinder Grey - Granitech
	Light Charcoal - Granitech
	Charcoal - Granitech
	Light Grey - Granitech
	Beige Grey - Granitech
	Beige - Granitech
	Opal White - Granitech
	Stanstead Grey - Granitech
	Cambrian Brown - Granitech
	Cambrian Black - Granitech

150 x 300

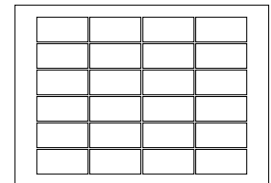


	Dimensions mm	Dimensions in.
A	100 x 150 x 300	4 x 5 7/8 x 11 13/16
Unit/area	22.22 units/m ²	2.06 units/ft ²
Cube ft ²	69.78	11.63 per row

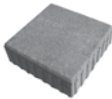
Mass/ft ²	22.33 kg	49.13 lb
Mass/ft ²	23.63 kg	51.99 lb
Mass/ft ²	28.83 kg	63.40 lb

Sold separately

Typical Row



300 x 300

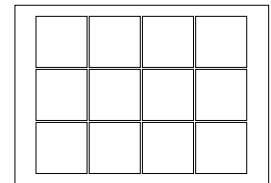


	Dimensions mm	Dimensions in.
B	100 x 300 x 300	4 x 11 13/16 x 11 13/16
Unit/area	11.11 units/m ²	1.03 units/ft ²
Cube ft ²	69.78	11.63 per row

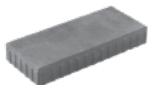
Mass/ft ²	22.33 kg	49.13 lb
Mass/ft ²	23.63 kg	51.99 lb
Mass/ft ²	28.83 kg	63.40 lb

Sold separately

Typical Row



300 x 700

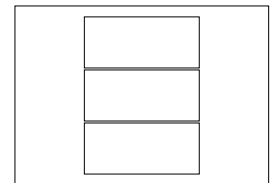


	Dimensions mm	Dimensions in.
C	150 x 300 x 700	4 x 11 13/16 x 27 9/16
Unit/area	22.8 units/m ²	50.16 units/ft ²
Cube ft ²	54.24	6.78 per row

Mass/ft ²	22.8 kg	50.16 lb
----------------------	---------	----------

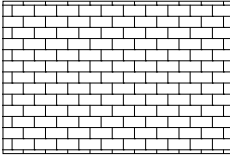
Smooth finish only

Typical Row

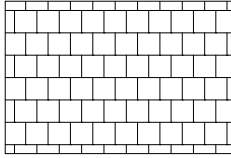


Boulevard TLI 100 Paver - cont'd

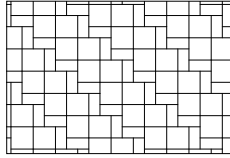
Laying Patterns



Linear



Linear



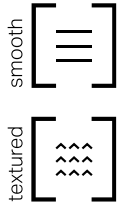
Modular
50% A + 50% B

TECHNICAL INFORMATION

Product	Standard	Flexural Strength	Compressive Strength	De-icing salts freeze-thaw durability	Density	Absorption	Dimension Tolerance*
Boulevard TLI 100 Paver							
150 x 300	CSA A231.2	N/A	μ 50 MPa ≥ 45 MPa	225 g/m ² after 28 cycles 500 g/m ² after 49 cycles	N/A	N/A	Length: -1.0 to +2.0 mm
300 x 300							Width: -1.0 to +2.0 mm
300 x 700							Height: ±3.0 mm

Setting of joint-filling sand: Cover the vibrating plate with a removable rubber tread (neoprene or polypropylene). Cover the snow removal tools with Teflon or neoprene protectors to minimize the risk of damage from scratches or concrete shards. Laying patterns: These laying patterns are by way of example only and represent only a few of many possibilities. Permacon shall not be responsible for the excess or shortage of pavers resulting from installation according to these laying patterns.

Boulevard TLI 150 Paver



smooth	Colour
	White - Smooth
	Cinder Grey - Smooth
	Charcoal - Smooth
	Light Charcoal - Smooth
	Black ETX - Smooth
	Light Grey - Smooth
	Beige Grey - Smooth
	Beige - Smooth

textured	Colour
	Cinder Grey - Granitech
	Light Charcoal - Granitech
	Charcoal - Granitech
	Light Grey - Granitech
	Beige Grey - Granitech
	Beige - Granitech
	Opal White - Granitech
	Stanstead Grey - Granitech
	Cambrian Brown - Granitech
	Cambrian Black - Granitech

125 x 150

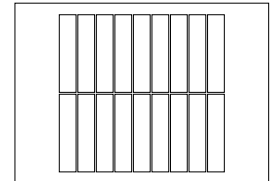


	Dimensions mm	Dimensions in.
A	150 x 500 x 125	5 7/8 x 19 11/16 x 4 15/16
Unit/area	16 units/m ²	1.49 units/ft ²
Cube ft ²	60.55	12.11 per row / 48.44 per cube

Mass/ft ²	32.6 kg	71.7 lb
Mass/ft ²	34.4 kg	75.7 lb
Mass/ft ²	43.6 kg	95.9 lb

Sold separately

Typical Row



250 x 500

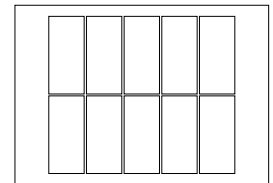


	Dimensions mm	Dimensions in.
B	150 x 500 x 250	5 7/8 x 19 11/16 x 9 7/8
Unit/area	8 units/m ²	0.74 unit/ft ²
Cube ft ²	67.25	13.45 per row / 40.35 per cube

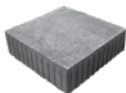
Mass/ft ²	32.6 kg	71.7 lb
Mass/ft ²	34.4 kg	75.7 lb
Mass/ft ²	43.6 kg	95.9 lb

Sold separately

Typical Row



500 x 500

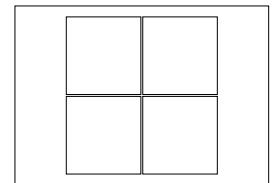


	Dimensions mm	Dimensions in.
C	150 x 500 x 500	5 7/8 x 19 11/16 x 19 11/16
Unit/area	4 units/m ²	0.37 unit/ft ²
Cube ft ²	64.56	10.76 per row / 43.04 per cube

Mass/ft ²	32.6 kg	71.7 lb
Mass/ft ²	34.4 kg	75.7 lb
Mass/ft ²	43.6 kg	95.9 lb

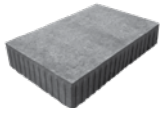
Sold separately

Typical Row



Boulevard TLI 150 Paver - cont'd

750 x 500

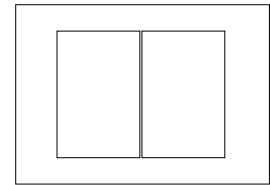


	Dimensions mm	Dimensions in.
D	150 x 500 x 750	5 7/8 x 19 11/16 x 29 1/2
Unit/area	2.67 units/m ²	0.25 unit/ft ²
Cube ft ²	48.42	8.07 per row

Mass/ft ²	32.6 kg	71.7 lb
Mass/ft ²	34.4 kg	75.7 lb
Mass/ft ²	43.6 kg	95.9 lb

Sold separately

Typical Row



200 x 200

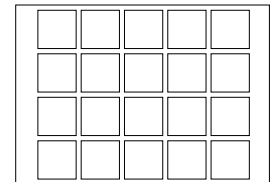


	Dimensions mm	Dimensions in.
E	150 x 200 x 200	5 7/8 x 7 7/8 x 7 7/8
Cube ft ²	51.6	8.6 per row

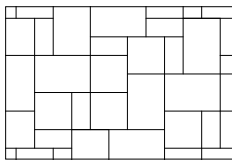
Mass/ft ²	32.6 kg	71.7 lb
Mass/ft ²	34.4 kg	75.7 lb
Mass/ft ²	43.6 kg	95.9 lb

Sold separately

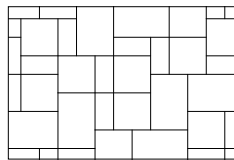
Typical Row



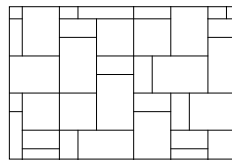
Laying Patterns



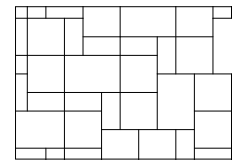
Modular
17% B + 33% C + 50% D



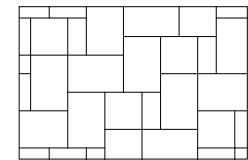
Modular
21% B + 42% C + 37% D



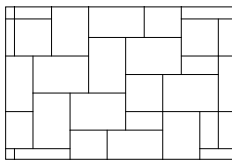
Modular
21% B + 17% C + 62% D



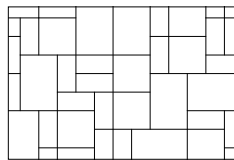
Modular
25% B + 50% C + 25% D



Modular
13% B + 25% C + 62% D



Modular
8% B + 17% C + 75% D



Modular
29% B + 33% C + 38% D

TECHNICAL INFORMATION

Product	Standard	Flexural Strength	Compressive Strength	De-icing salts freeze-thaw durability	Density	Absorption	Dimension Tolerance*
Boulevard TLI 150 Paver							
125 x 500							
250 x 500	CSA A231.2	N/A	μ 50 MPa ≥ 45 MPa	225 g/m ² after 28 cycles 500 g/m ² after 49 cycles	N/A	N/A	Length: -1.0 to +2.0 mm
500 x 500							Width: -1.0 to +2.0 mm
750 x 500							Height: ±3.0 mm
200 x 200							

Setting of joint-filling sand: Cover the vibrating plate with a removable rubber tread (neoprene or polypropylene). Cover the snow removal tools with Teflon or neoprene protectors to minimize the risk of damage from scratches or concrete shards. Laying patterns: These laying patterns are by way of example only and represent only a few of many possibilities. Permacon shall not be responsible for the excess or shortage of pavers resulting from installation according to these laying patterns.