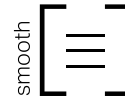




## Suretouch Virtuo Stone

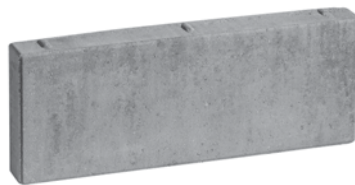


- Fine lines and smooth surfaces
- Available in various trendy and contemporary colours
- Fully finished corners

|                      |        |
|----------------------|--------|
| Weight per cube (kg) | 1183   |
| Rows per cube        | 12     |
| Sq.ft. per row       | 9.32   |
| Sq.ft. per cube      | 111.84 |
| Lin. ft. per row     | 14     |
| Lin. ft. per cube    | 168.05 |



A



B

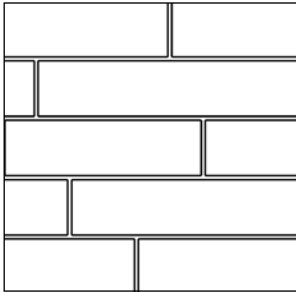


C



D

**Laying Pattern:**



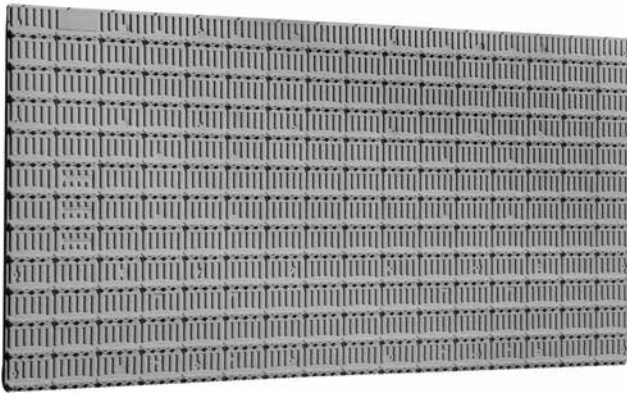
Linear

\* Follow the polystyrene laying pattern

**Typical Layout:**



**Components**



Polystyrene panel  
50 x 1219 x 2438 mm - 2 x 48 x 96 in



Kit 90 - anchors, screws,  
weep



Starter Base  
83 x 83 x 3048 mm - 3 1/2 x 3 1/2 x 120 in

**Necessary installation material**

| Virtuo Stone                   |  |              | Product code                   |
|--------------------------------|--|--------------|--------------------------------|
| <b>Sq.ft. of stone/pallet</b>  | 1 cube = 12 rows                             | 1 row = 9.32 | Total : 111.84 ft <sup>2</sup> |
| <b>Polystyrene panels</b>      | 1 pack (6 panels) = 1 cube of stone          |              | 1 panel = 32.5 ft <sup>2</sup> |
| <b>Kit 90 - anchors/screws</b> | 1 box of anchors/screws 90 = 1 cube of stone |              | 34350052                       |
|                                | 1 bag 30 kg = 45 ft <sup>2</sup>             |              | 34359020                       |
| <b>Mortar</b>                  | 1-1-6 mortar mix recommended                 |              |                                |

**Technical information**

| Product             | Standard    | Compressive Strength | Density                        | Dimension Tolerance                                      |
|---------------------|-------------|----------------------|--------------------------------|--|
| <b>Virtuo Stone</b> | CSA A165.94 | 25 MPa               | A: Over 2000 kg/m <sup>3</sup> | Thickness: ±2.0 mm<br>Height: ±2.0 mm<br>Length: ±3.0 mm |

\* See CCMC accreditation for more technical information