

# Cassara® Verde Paver

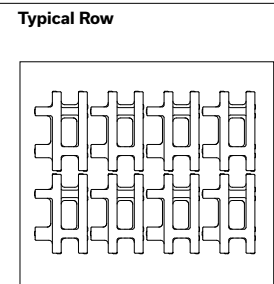


smooth [ ]

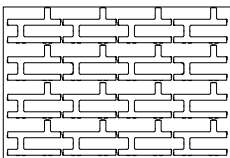


	Dimensions mm	Dimensions in.
	80 x 300 x 450	3 1/8 x 11 13/16 x 17 3/4
Weight/unit	12 kg	26 lb
Unit/area	7.36 units/m <sup>2</sup>	0.68 unit/ft <sup>2</sup>
Area/layer	1.09 m <sup>2</sup>	11.72 ft <sup>2</sup>
<b>Area/cube</b>	<b>10.9 m<sup>2</sup></b>	<b>10 Rows 117.2 ft<sup>2</sup></b>
Length/row	3.6 lin. m	11.81 lin. ft
Length/cube	36 lin. m	118.10 lin. ft
Qty/cube	80 units	80 units
Weight/cube	960 kg	2080 lb

Code	Colour
	<b>Standard</b>
10303142	Range Shaded Grey
Sold in full cubes only	
Production location St-Eustache	



## Laying Pattern



Checkerboard

## TECHNICAL INFORMATION

Product	Standard	Void Opening	Flexural Strength	Compressive Strength	De-icing salts freeze-thaw durability	Density	Absorption	Dimension Tolerance*
Cassara Verde Paver	CSA A231.2	50%	N/A	μ 50 MPa ≥ 45 MPa	225 g/m <sup>2</sup> after 28 cycles 500 g/m <sup>2</sup> after 49 cycles	N/A	N/A	Length: -1.0 to +2.0 mm Width: -1.0 to +2.0 mm Height: ±3.0 mm

Cover snow removal tools with Teflon or neoprene protectors to minimize the risk of damage from scratches. Additional details: See our landscaping installation guide on our website (Permeable pavement section).