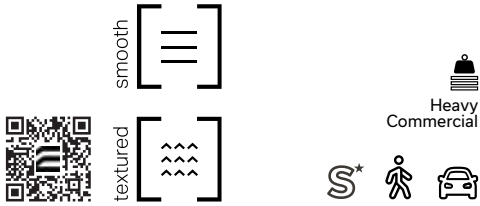


# Boulevard TLI 90 Paver



smooth [ ]	Colour	
	White - Smooth	
	Cinder Grey - Smooth	
	Charcoal - Smooth	
	Light Charcoal - Smooth	
	Black ETX - Smooth	
	Light Grey - Smooth	
	Beige Grey - Smooth	
	Beige - Smooth	

textured [ ]	Colour	
	Cinder Grey - Granitech	
	Light Charcoal - Granitech	
	Charcoal - Granitech	
	Light Grey - Granitech	
	Beige Grey - Granitech	
	Beige - Granitech	
	Opal White - Granitech	
	Stanstead Grey - Granitech	
	Cambrian Brown - Granitech	
	Cambrian Black - Granitech	

## 160 x 240

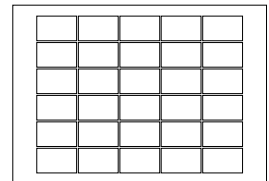


	Dimensions mm	Dimensions in.
A	90 x 160 x 240	3 1/2 x 6 5/16 x 9 1/2
Unit/area	26 units/m <sup>2</sup>	2.42 units/ft <sup>2</sup>
Cube ft <sup>2</sup>	86.8	12.4 per row

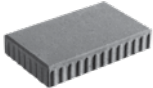
Mass/ft <sup>2</sup>	22.33 kg	49.13 lb
Mass/ft <sup>2</sup>	23.63 kg	51.99 lb
Mass/ft <sup>2</sup>	28.83 kg	63.40 lb

Sold separately

### Typical Row



## 320 x 520

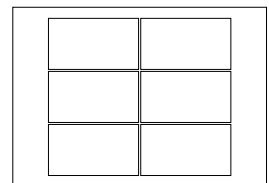


	Dimensions mm	Dimensions in.
B	90 x 320 x 520	3 1/2 x 12 5/8 x 20 23/48
Unit/area	6 units/m <sup>2</sup>	0.56 unit/ft <sup>2</sup>
Cube ft <sup>2</sup>	86	10.75 per row

Mass/ft <sup>2</sup>	22.33 kg	49.13 lb
Mass/ft <sup>2</sup>	23.63 kg	51.99 lb
Mass/ft <sup>2</sup>	28.83 kg	63.40 lb

Sold separately

### Typical Row

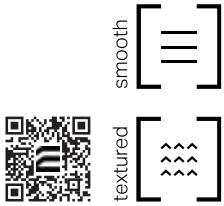


## TECHNICAL INFORMATION

Product	Standard	Flexural Strength	Compressive Strength	De-icing salts freeze-thaw durability	Density	Absorption	Dimension Tolerance*
<b>Boulevard TLI 90 Paver</b> 160 x 240 320 x 520	CSA A231.2	N/A	μ 50 MPa ≥ 45 MPa	225 g/m <sup>2</sup> after 28 cycles 500 g/m <sup>2</sup> after 49 cycles	N/A	N/A	Length: -1.0 to +2.0 mm Width: -1.0 to +2.0 mm Height: ±3.0 mm

Setting of joint-filling sand: Cover the vibrating plate with a removable rubber tread (neoprene or polypropylene). Cover the snow removal tools with Teflon or neoprene protectors to minimize the risk of damage from scratches or concrete shards. Laying patterns: These laying patterns are by way of example only and represent only a few of many possibilities. Permacon shall not be responsible for the excess or shortage of pavers resulting from installation according to these laying patterns.

# Boulevard TLI 100 Paver



smooth	Colour
	White - Smooth
	Cinder Grey - Smooth
	Charcoal - Smooth
	Light Charcoal - Smooth
	Black ETX - Smooth
	Light Grey - Smooth
	Beige Grey - Smooth
	Beige - Smooth

textured	Colour
	Cinder Grey - Granitech
	Light Charcoal - Granitech
	Charcoal - Granitech
	Light Grey - Granitech
	Beige Grey - Granitech
	Beige - Granitech
	Opal White - Granitech
	Stanstead Grey - Granitech
	Cambrian Brown - Granitech
	Cambrian Black - Granitech

150 x 300

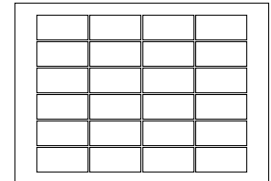


	Dimensions mm	Dimensions in.
A	100 x 150 x 300	4 x 5 7/8 x 11 13/16
Unit/area	22.22 units/m <sup>2</sup>	2.06 units/ft <sup>2</sup>
Cube ft <sup>2</sup>	69.78	11.63 per row

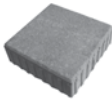
Mass/ft <sup>2</sup>	22.33 kg	49.13 lb
Mass/ft <sup>2</sup>	23.63 kg	51.99 lb
Mass/ft <sup>2</sup>	28.83 kg	63.40 lb

Sold separately

Typical Row



300 x 300

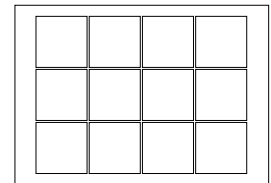


	Dimensions mm	Dimensions in.
B	100 x 300 x 300	4 x 11 13/16 x 11 13/16
Unit/area	11.11 units/m <sup>2</sup>	1.03 units/ft <sup>2</sup>
Cube ft <sup>2</sup>	69.78	11.63 per row

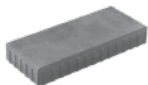
Mass/ft <sup>2</sup>	22.33 kg	49.13 lb
Mass/ft <sup>2</sup>	23.63 kg	51.99 lb
Mass/ft <sup>2</sup>	28.83 kg	63.40 lb

Sold separately

Typical Row



300 x 700

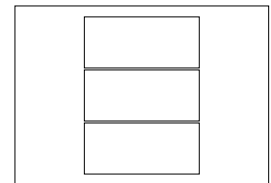


	Dimensions mm	Dimensions in.
C	150 x 300 x 700	4 x 11 13/16 x 27 9/16
Unit/area	22.8 units/m <sup>2</sup>	50.16 units/ft <sup>2</sup>
Cube ft <sup>2</sup>	54.24	6.78 per row

Mass/ft <sup>2</sup>	22.8 kg	50.16 lb
----------------------	---------	----------

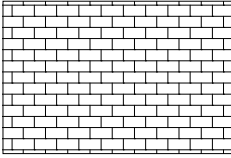
Smooth finish only

Typical Row

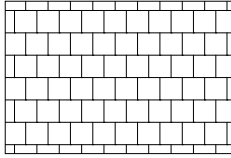


# Boulevard TLI 100 Paver - cont'd

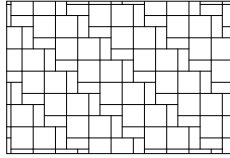
## Laying Patterns



Linear



Linear



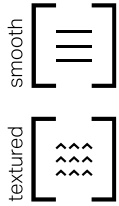
Modular  
50% A + 50% B

## TECHNICAL INFORMATION

Product	Standard	Flexural Strength	Compressive Strength	De-icing salts freeze-thaw durability	Density	Absorption	Dimension Tolerance*
<b>Boulevard TLI 100 Paver</b>							
150 x 300	CSA A231.2	N/A	μ 50 MPa ≥ 45 MPa	225 g/m <sup>2</sup> after 28 cycles 500 g/m <sup>2</sup> after 49 cycles	N/A	N/A	Length: -1.0 to +2.0 mm
300 x 300							Width: -1.0 to +2.0 mm
300 x 700							Height: ±3.0 mm

Setting of joint-filling sand: Cover the vibrating plate with a removable rubber tread (neoprene or polypropylene). Cover the snow removal tools with Teflon or neoprene protectors to minimize the risk of damage from scratches or concrete shards. Laying patterns: These laying patterns are by way of example only and represent only a few of many possibilities. Permacon shall not be responsible for the excess or shortage of pavers resulting from installation according to these laying patterns.

# Boulevard TLI 150 Paver



Heavy Commercial



smooth	Colour
	White - Smooth
	Cinder Grey - Smooth
	Charcoal - Smooth
	Light Charcoal - Smooth
	Black ETX - Smooth
	Light Grey - Smooth
	Beige Grey - Smooth
	Beige - Smooth

textured	Colour
	Cinder Grey - Granitech
	Light Charcoal - Granitech
	Charcoal - Granitech
	Light Grey - Granitech
	Beige Grey - Granitech
	Beige - Granitech
	Opal White - Granitech
	Stanstead Grey - Granitech
	Cambrian Brown - Granitech
	Cambrian Black - Granitech

## 125 x 150

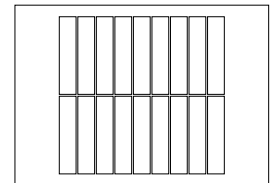


	Dimensions mm	Dimensions in.
A	150 x 500 x 125	5 7/8 x 19 11/16 x 4 15/16
Unit/area	16 units/m <sup>2</sup>	1.49 units/ft <sup>2</sup>
Cube ft <sup>2</sup>	60.55	12.11 per row / 48.44 per cube

Mass/ft <sup>2</sup>	32.6 kg	71.7 lb
Mass/ft <sup>2</sup>	34.4 kg	75.7 lb
Mass/ft <sup>2</sup>	43.6 kg	95.9 lb

Sold separately

### Typical Row



## 250 x 500

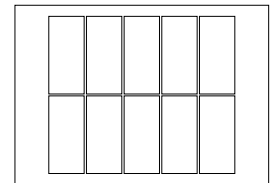


	Dimensions mm	Dimensions in.
B	150 x 500 x 250	5 7/8 x 19 11/16 x 9 7/8
Unit/area	8 units/m <sup>2</sup>	0.74 unit/ft <sup>2</sup>
Cube ft <sup>2</sup>	67.25	13.45 per row / 40.35 per cube

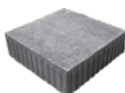
Mass/ft <sup>2</sup>	32.6 kg	71.7 lb
Mass/ft <sup>2</sup>	34.4 kg	75.7 lb
Mass/ft <sup>2</sup>	43.6 kg	95.9 lb

Sold separately

### Typical Row



## 500 x 500

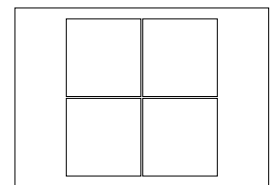


	Dimensions mm	Dimensions in.
C	150 x 500 x 500	5 7/8 x 19 11/16 x 19 11/16
Unit/area	4 units/m <sup>2</sup>	0.37 unit/ft <sup>2</sup>
Cube ft <sup>2</sup>	64.56	10.76 per row / 43.04 per cube

Mass/ft <sup>2</sup>	32.6 kg	71.7 lb
Mass/ft <sup>2</sup>	34.4 kg	75.7 lb
Mass/ft <sup>2</sup>	43.6 kg	95.9 lb

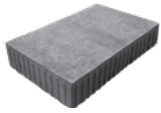
Sold separately

### Typical Row



# Boulevard TLI 150 Paver - cont'd

750 x 500

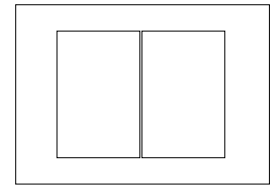


	Dimensions mm	Dimensions in.
D	150 x 500 x 750	5 7/8 x 19 11/16 x 29 1/2
Unit/area	2.67 units/m <sup>2</sup>	0.25 unit/ft <sup>2</sup>
Cube ft <sup>2</sup>	48.42	8.07 per row

Mass/ft <sup>2</sup>	32.6 kg	71.7 lb
Mass/ft <sup>2</sup>	34.4 kg	75.7 lb
Mass/ft <sup>2</sup>	43.6 kg	95.9 lb

Sold separately

Typical Row



200 x 200

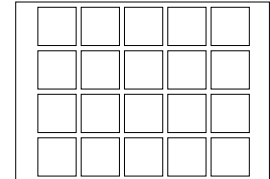


	Dimensions mm	Dimensions in.
E	150 x 200 x 200	5 7/8 x 7 7/8 x 7 7/8
Cube ft <sup>2</sup>	51.6	8.6 per row

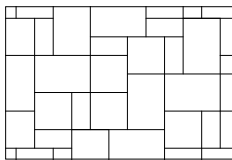
Mass/ft <sup>2</sup>	32.6 kg	71.7 lb
Mass/ft <sup>2</sup>	34.4 kg	75.7 lb
Mass/ft <sup>2</sup>	43.6 kg	95.9 lb

Sold separately

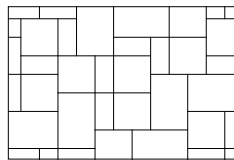
Typical Row



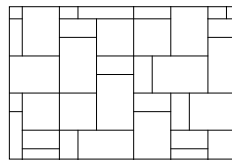
## Laying Patterns



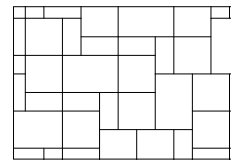
Modular  
17% B + 33% C + 50% D



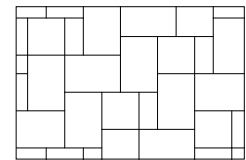
Modular  
21% B + 42% C + 37% D



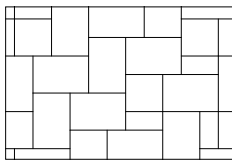
Modular  
21% B + 17% C + 62% D



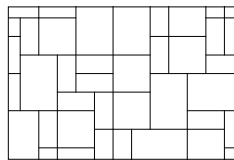
Modular  
25% B + 50% C + 25% D



Modular  
13% B + 25% C + 62% D



Modular  
8% B + 17% C + 75% D



Modular  
29% B + 33% C + 38% D

## TECHNICAL INFORMATION

Product	Standard	Flexural Strength	Compressive Strength	De-icing salts freeze-thaw durability	Density	Absorption	Dimension Tolerance*
<b>Boulevard TLI 150 Paver</b>							
125 x 500							
250 x 500	CSA A231.2	N/A	μ 50 MPa ≥ 45 MPa	225 g/m <sup>2</sup> after 28 cycles 500 g/m <sup>2</sup> after 49 cycles	N/A	N/A	Length: -1.0 to +2.0 mm Width: -1.0 to +2.0 mm Height: ±3.0 mm
500 x 500							
750 x 500							
200 x 200							

Setting of joint-filling sand: Cover the vibrating plate with a removable rubber tread (neoprene or polypropylene). Cover the snow removal tools with Teflon or neoprene protectors to minimize the risk of damage from scratches or concrete shards. Laying patterns: These laying patterns are by way of example only and represent only a few of many possibilities. Permacon shall not be responsible for the excess or shortage of pavers resulting from installation according to these laying patterns.