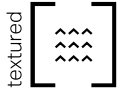


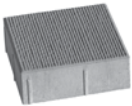
# Boulevard Striated Paver



## Colour

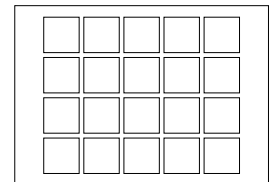


Cinder Grey - Granitech
Light Charcoal - Granitech
Charcoal - Granitech
Light Grey - Granitech
Beige Grey - Granitech
Beige - Granitech
Opal White - Granitech
Stanstead Grey - Granitech
Shefford Beige - Granitech
Cambrian Brown - Granitech
Cambrian Black - Granitech



	Dimensions mm	Dimensions in.
	100 x 300 x 300	4 x 11 13/16 x 11 13/16
Unit/area	11.11 units/m <sup>2</sup>	1.03 units/ft <sup>2</sup>
Cube ft <sup>3</sup>	69.78	11.63 per row
Mass/ft <sup>2</sup>	22.33 kg	49.13 lb

## Typical Row



## TECHNICAL INFORMATION

Product	Standard	Flexural Strength	Compressive Strength	De-icing salts freeze-thaw durability	Density	Absorption	Dimension Tolerance*
<b>Boulevard Striated Paver</b>	CSA A231.2	N/A	μ 50 MPa ≥ 45 MPa	225 g/m <sup>2</sup> after 28 cycles 500 g/m <sup>2</sup> after 49 cycles	N/A	N/A	Length: -1.0 to +2.0 mm Width: -1.0 to +2.0 mm Height: ±3.0 mm

Setting of joint-filling sand: Cover the vibrating plate with a removable rubber tread (neoprene or polypropylene). Cover the snow removal tools with Teflon or neoprene protectors to minimize the risk of damage from scratches or concrete shards. Laying patterns: These laying patterns are by way of example only and represent only a few of many possibilities. Permacon shall not be responsible for the excess or shortage of pavers resulting from installation according to these laying patterns.