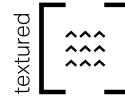


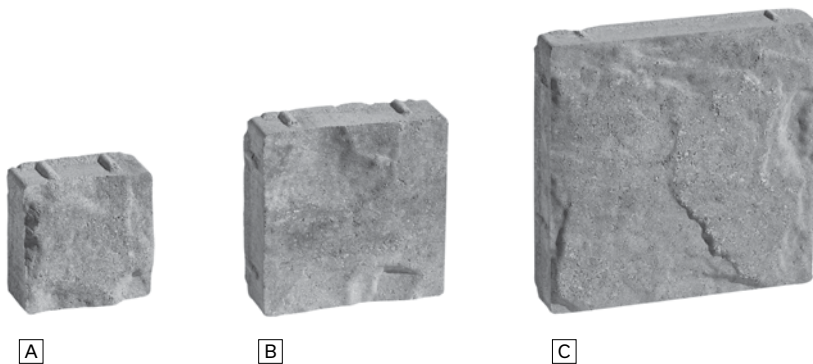


Suretouch Durham Stone

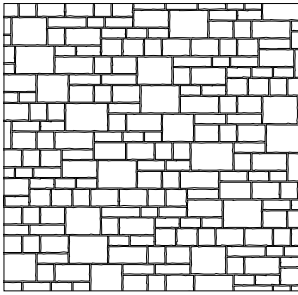


A key feature is its rustic texture inspired by the French country manor.

Weight per cube (kg)	1415
Rows per cube	12
Sq.ft. per row	12.43
Sq.ft. per cube	149.16
<hr/>	
Suretouch System weight (stone, mortar, panel and hardware)	22 lb/ft ² approximately



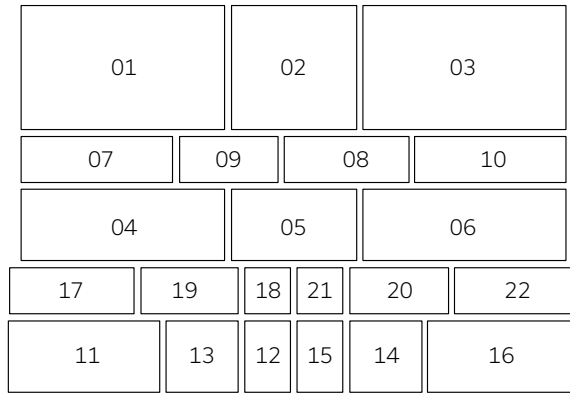
Laying Pattern:



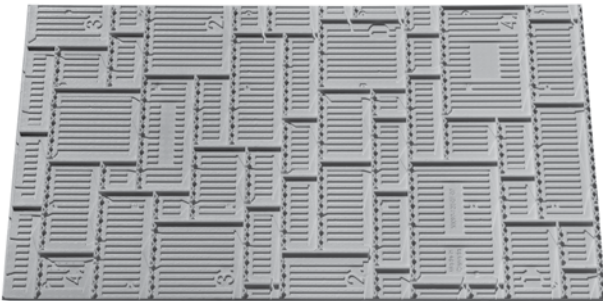
Linear

* Follow the polystyrene laying pattern

Typical Row:



Components



Polystyrene panel
50 x 1219 x 2438 mm - 2 x 48 x 96 in



Kit 90 - anchors, screws, weep



Starter Base
83 x 83 x 3048 mm - 3 1/2 x 3 1/2 x 120 in

Necessary installation material

Durham Stone				Product code
Sq.ft. of stone/pallet	1 cube = 12 rows	1 row = 12.42	Total : 149 ft ²	
Polystyrene panels	1 pack (7 panels) = 1 cube of stone		1 panel = 26 ft ²	34359039
Kit 90 - anchors/screws	1 box of anchors/screws 90 = 1 cube of stone			34359020
	1 bag 30 kg = 35 ft ²			
Mortar	1-1-6 mortar mix recommended			

Technical information

Product	Standard	Compressive Strength	Density	Dimension Tolerance
Durham Stone	CSA A165.94	25 MPa	A: Over 2000 kg/m ³	Thickness: ±2.0 mm Height: ±2.0 mm Length: ±3.0 mm

* See CCMC accreditation for more technical information