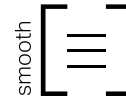




## Suretouch Virtuo Stone



- Fine lines and smooth surfaces
- Available in various trendy and contemporary colours
- Fully finished corners

Weight per cube (kg)	1183
Rows per cube	12
Sq.ft. per row	9.32
Sq.ft. per cube	111.84
Lin. ft. per row	14
Lin. ft. per cube	168.05

Suretouch System weight (stone, mortar, panel and hardware)	22 lb/ft <sup>2</sup> approximately
---	-------------------------------------



B



C

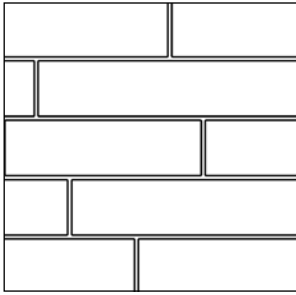


A



D

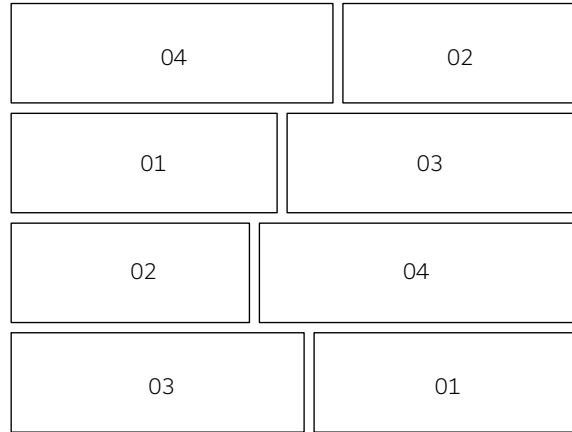
**Laying Pattern:**



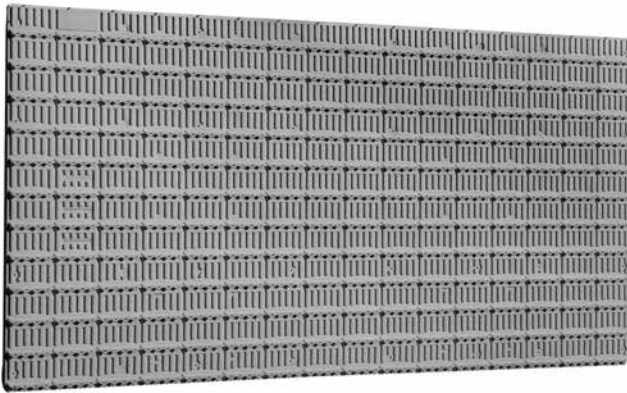
Linear

\* Follow the polystyrene laying pattern

**Typical Layout:**



**Components**



Polystyrene panel  
50 x 1219 x 2438 mm - 2 x 48 x 96 in



Kit 90 - anchors, screws, weep



Starter Base  
83 x 83 x 3048 mm - 3 1/2 x 3 1/2 x 120 in

**Necessary installation material**

Virtuo Stone			Product code
<b>Sq.ft. of stone/pallet</b>	1 cube = 12 rows	1 row = 9.32	Total : 111.84 ft <sup>2</sup>
<b>Polystyrene panels</b>	1 pack (6 panels) = 1 cube of stone		1 panel = 32.5 ft <sup>2</sup>
<b>Kit 90 - anchors/screws</b>	1 box of anchors/screws 90 = 1 cube of stone		34350052
	1 bag 30 kg = 45 ft <sup>2</sup>		34359020
<b>Mortar</b>	1-1-6 mortar mix recommended		

**Technical information**

Product	Standard	Compressive Strength	Density	Dimension Tolerance
<b>Virtuo Stone</b>	CSA A165.94	25 MPa	A: Over 2000 kg/m <sup>3</sup>	Thickness: ±2.0 mm Height: ±2.0 mm Length: ±3.0 mm

\* See CCMC accreditation for more technical information