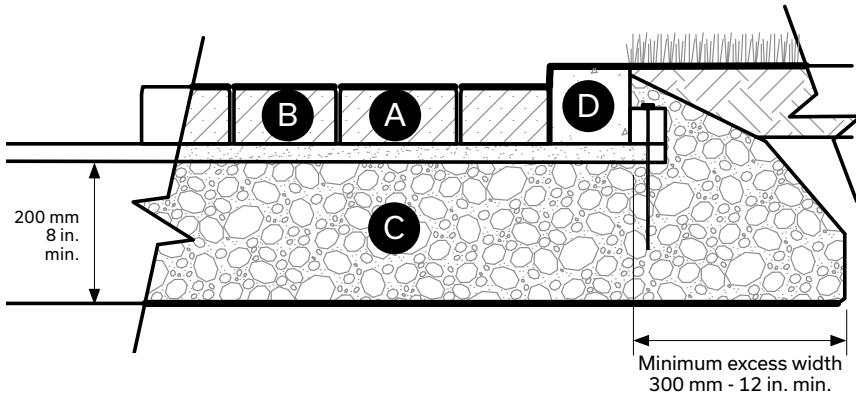


# Curbs

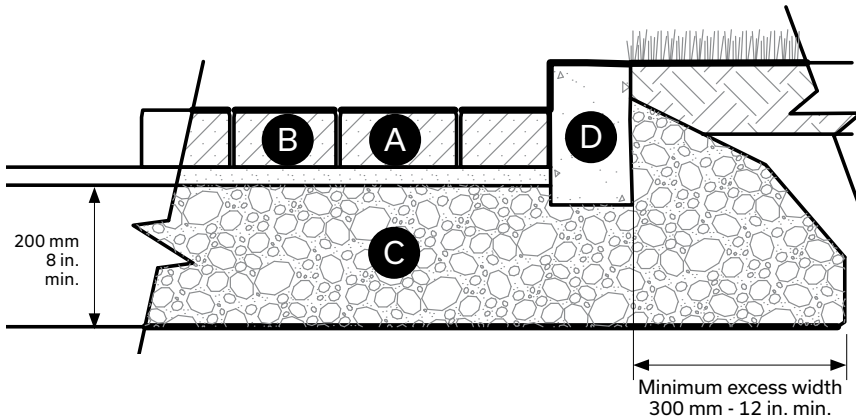
## TYPICAL INSTALLATION

### TYPICAL PAVER INSTALLATION WITH MELVILLE CURB, LAFITT CURB OR CELTIK CURB



- Ⓐ Paving stones
- Ⓑ Installation bed 25 mm - 1 in. (concrete sand)
- Ⓒ Compacted granular foundation: 0 to 20 mm - 0 to 3/4 in.
- Ⓓ Curb

### TYPICAL PAVER INSTALLATION WITH NOVO CURB



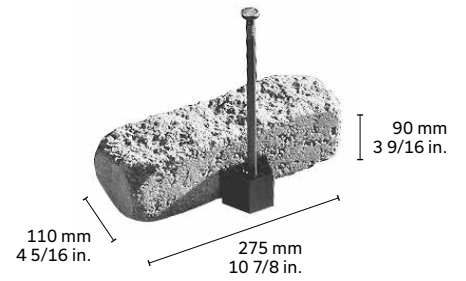
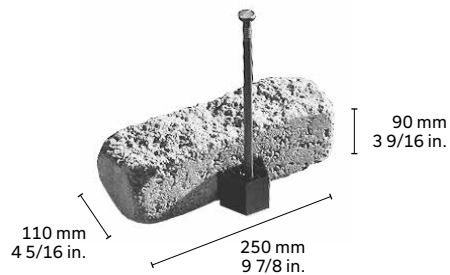
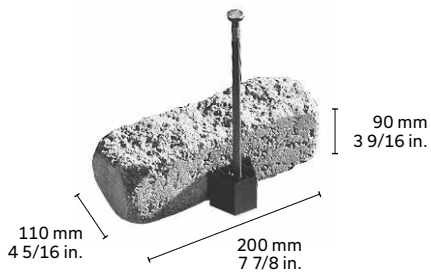
- Ⓐ Paving stones
- Ⓑ Installation bed 25 mm - 1 in. (concrete sand)
- Ⓒ Compacted granular foundation: 0 to 20 mm - 0 to 3/4 in.
- Ⓓ Novo curb

# Celtik® Curb

## SPECIFIC DETAILS

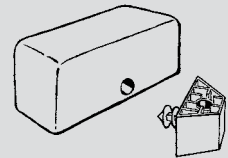


## UNITS

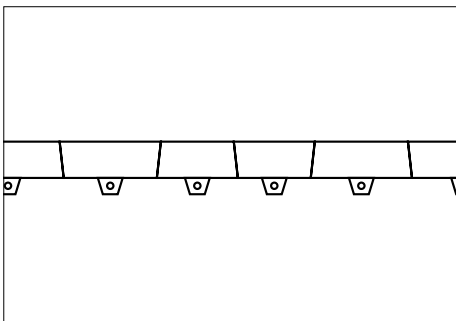


### C3-ANCHORS

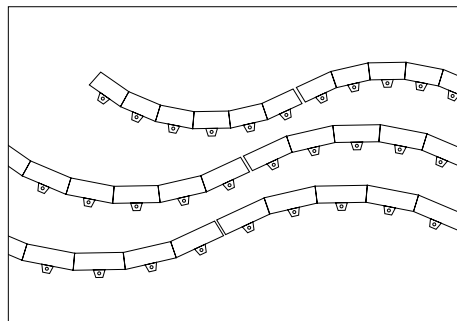
NOTE: in order to facilitate orders by half layer (13 lin.ft.) each row must include 2 boxes of anchors. Each box contains 16 C3-anchors and 16 nails.



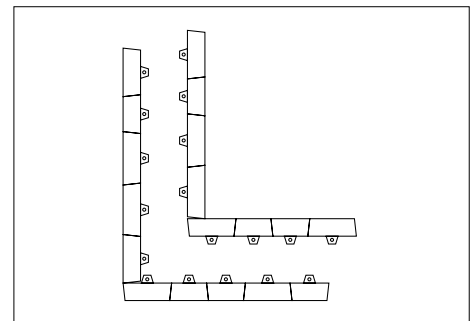
## LAYING IDEAS



For a straight line curb, use alternating angled curb units.



For a concave or convex curve, lay curb units in the same direction.



For a 90° corner, simply align curb units at this angle.