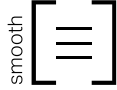
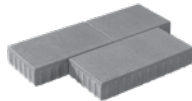


# Boulevard TLI 100 Crescendo 300 Paver



## Colour

White - Smooth
Cinder Grey - Smooth
Charcoal - Smooth
Light Charcoal - Smooth
Black ETX - Smooth
Light Grey - Smooth
Beige Grey - Smooth
Beige - Smooth
Red - Smooth

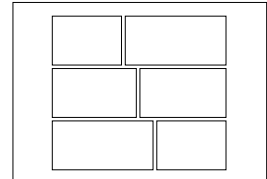


	Dimensions mm	Dimensions in.
A	100 x 300 x 400	4 x 11 13/16 x 15 3/4
B	100 x 300 x 500	4 x 11 13/16 x 19 11/16
C	100 x 300 x 600	4 x 11 13/16 x 23 5/8
Unit/area	22.8 kg	50.16 lb
Cube ft <sup>2</sup>	77.52	9.69 per row

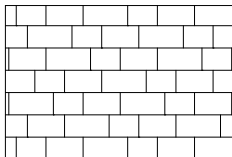
Mass/ft <sup>2</sup>	22.8 kg	50.16 lb
----------------------	---------	----------

Units are not sold separately

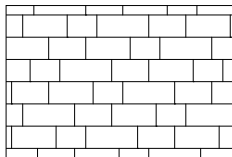
## Typical Row



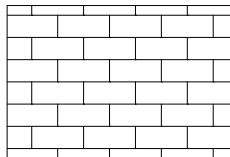
## Laying Patterns



Linear



Linear  
70% ABC + 30% D



Linear  
100% D

## TECHNICAL INFORMATION

Product	Standard	Flexural Strength	Compressive Strength	De-icing salts freeze-thaw durability	Density	Absorption	Dimension Tolerance*
<b>Boulevard TLI 100 Crescendo 300 Paver</b>							
300 x 400	CSA A231.2	N/A	μ 50 MPa	225 g/m <sup>2</sup> after 28 cycles	N/A	N/A	Length: -1.0 to +2.0 mm
300 x 500			≥ 45 MPa	500 g/m <sup>2</sup> after 49 cycles			Width: -1.0 to +2.0 mm
300 x 600							Height: ±3.0 mm

Setting of joint-filling sand: Cover the vibrating plate with a removable rubber tread (neoprene or polypropylene). Cover the snow removal tools with Teflon or neoprene protectors to minimize the risk of damage from scratches or concrete shards. Laying patterns: These laying patterns are by way of example only and represent only a few of many possibilities. Permacon shall not be responsible for the excess or shortage of pavers resulting from installation according to these laying patterns.