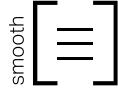


Boulevard Verde Paver



Light Commercial



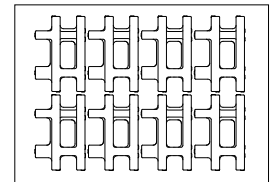
Colour

| |
|-------------------------|
| White - Smooth |
| Cinder Grey - Smooth |
| Charcoal - Smooth |
| Light Charcoal - Smooth |
| Black ETX - Smooth |
| Light Grey - Smooth |
| Beige Grey - Smooth |
| Beige - Smooth |

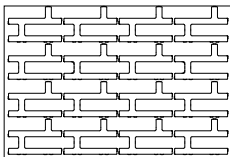


| | Dimensions mm | Dimensions in. |
|------------------|---------------------------|-----------------------------|
| | 100 x 300 x 450 | 4 x 11 13/16 x 17 3/4 |
| Weight/unit | 13 kg | 28 lb |
| Unit/area | 7.36 units/m ² | 0.68 units/ft ² |
| Area/layer | 1.09 m ² | 11.72 ft ² |
| Area/cube | 8.72 m² | 93.76 ft² |
| Length/row | 3.60 lin. m | 11.81 lin. ft |
| Length/cube | 28.80 lin. m | 94.48 lin. ft |
| Qty/cube | 64 units | 64 units |
| Weight/cube | 1003 kg | 2213 lb |

Typical Row



Laying Pattern



Checkerboard

TECHNICAL INFORMATION

| Product | Standard | Void Opening | Flexural Strength | Compressive Strength | De-icing salts freeze-thaw durability | Density | Absorption | Dimension Tolerance* |
|------------------------------|------------|--------------|-------------------|----------------------|--|---------|------------|--|
| Boulevard Verde Paver | CSA A231.2 | 50% | N/A | μ 50 MPa ≥ 45 MPa | 225 g/m ² after 28 cycles 500 g/m ² after 49 cycles | N/A | N/A | Length: -1.0 to +2.0 mm Width: -1.0 to +2.0 mm Height: ±3.0 mm |

Cover the snow removal tools with Teflon or neoprene protectors to minimize the risk of damage from scratches or concrete shards. Laying patterns: These laying patterns are by way of example only and represent only a few of many possibilities. Permacon shall not be responsible for the excess or shortage of pavers resulting from installation according to these laying patterns.