

# Cassara® Verde Paver

	Metric (mm)	Imperial (in.)
	80 x 300 x 450	3 1/8 x 11 13/16 x 17 3/4
Weight/unit	13 kg	28 lb
Unit/area	7.36 units/m <sup>2</sup>	0.68 unit/ft <sup>2</sup>
Area/layer	1.09 m <sup>2</sup>	11.72 ft <sup>2</sup>
Area/cube	10.9 m <sup>2</sup> 10 Rows	117.2 ft <sup>2</sup>
Length/row	3.6 lin. m	11.81 lin. ft
Length/cube	36 lin. m	118.10 lin. ft
Qty/cube	80 units	80 units
Weight/cube	1003 kg	2213 lb

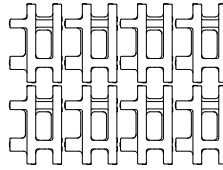
  

Code	Colour
10303142	Range Shaded Grey

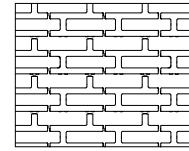
  

Production location	Montreal
---------------------	----------

## Typical Row



## Laying Pattern



Checkerboard



## Technical Information

Product	Cassara Verde Paver
Standard	CSA A231.2
Flexural Strength	N/A
Compressive Strength	μ 50 MPa ≥ 45 MPa
De-icing salts freeze-thaw durability	225 g/m <sup>2</sup> after 28 cycles 500 g/m <sup>2</sup> after 49 cycles
Density	N/A
Absorption	N/A
Dimension Tolerance*	Length: -1.0 to +2.0 mm Width: -1.0 to +2.0 mm Height: ±3.0 mm

Cover snow removal tools with Teflon or neoprene protectors to minimize the risk of damage from scratches. Additional details: See our landscaping installation guide on our website.