

# Split Face Universal Slope Block Wall

|             | Metric (mm)                | Imperial (in.)             |
|-------------|----------------------------|----------------------------|
|             | 134 x 305 x 215            | 5 5/16 x 12 x 8 1/2        |
| Weight/unit | 20 kg                      | 43 lb                      |
| Unit/area   | 34.40 units/m <sup>2</sup> | 3.20 units/ft <sup>2</sup> |
| Area/cube   | 2.32 m <sup>2</sup>        | 25.00 ft <sup>2</sup>      |
| Qty/cube    | 80 units    4 Rows         | 80 units                   |
| Weight/cube | 1590 kg                    | 3498 lb                    |

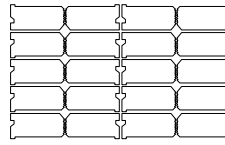
  

| Code     | Colour |
|----------|--------|
| 16259167 | Grey   |

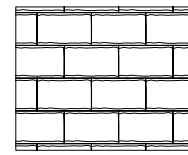
|                     |        |
|---------------------|--------|
| Production location | Quebec |
| Splitting required  |        |
| Sold in full cubes  |        |

## Typical Row



Packaged vertically

## Laying Pattern



Linear



## Technical Information

|                                       |  |
|---------------------------------------|--|
| Product                               | Split Face Universal Slope Block                     |
| Standard                              | ASTM C 1372  |
| Flexural Strength                     | N/A  |
| Compressive Strength                  | 20.7 MPa   |
| De-icing salts freeze-thaw durability | N/A  |
| Density                               | 2000 kg/m <sup>2</sup>                               |
| Absorption                            | 10.4%  |
| Dimension Tolerance*                  | Length: ±3.2 mm<br>Width: ±3.2 mm<br>Height: ±3.2 mm |

### Applications: Retaining walls

Additional details specific to this product are available by consulting our landscaping installation guide on our website.