

Lafitt® Tandem® 90 and 180 Wall

90 Veneer	Metric (mm)	Imperial (in.)
A	90 x 67 x 201	3 9/16 x 2 5/8 x 7 7/8
B	90 x 67 x 268	3 9/16 x 2 5/8 x 10 1/2
C	90 x 67 x 335	3 9/16 x 2 5/8 x 13 3/16
D	90 x 67 x 402	3 9/16 x 2 5/8 x 15 13/16
Weight/unit (avg.)	4 kg	8 lb
Area/layer	0.98 m ²	10.53 ft ²
Area/cube	3.92 m ² 4 Rows	42.12 ft ²
Qty/cube	A = 36 B = 36 C = 36 D = 36	
Length/row	10.89 lin. m	35.64 lin. ft
Length/cube	43.56 lin. m	142.56 lin. ft
Weight/cube	550 kg	1210 lb

Code	Colour
16250906	Range Margaux Beige
16250907	Range Newport Grey
16251849	Range Scandina Grey

Production location Metcalfe

Can be double stacked

A set of 4 units = 1.17 ft²

Sold in full cubes

180 Veneer	Metric (mm)	Imperial (in.)
E	180 x 67 x 335	7 1/16 x 2 5/8 x 13 3/16
F	180 x 67 x 402	7 1/16 x 2 5/8 x 15 13/16
G	180 x 67 x 469	7 1/16 x 2 5/8 x 18 1/2
Weight/unit (avg.)	10 kg	21 lb
Area/layer	1.08 m ²	11.63 ft ²
Area/cube	4.32 m ² 4 Rows	46.52 ft ²
Qty/cube	E = 20 F = 20 G = 20	
Length/row	6.02 lin. m	19.75 lin. ft
Length/cube	24.08 lin. m	79.00 lin. ft
Weight/cube	634 kg	1395 lb

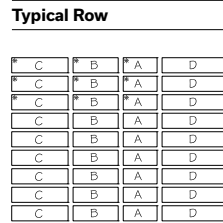
Code	Colour
16250910	Range Margaux Beige
16250909	Range Newport Grey
16251853	Range Scandina Grey

Production location Metcalfe

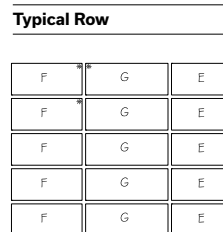
Can be double stacked

A set of 3 units = 2.32 ft²

Sold in full cubes

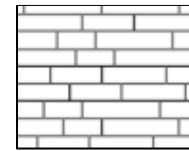


*Veneer with one textured side (corner)

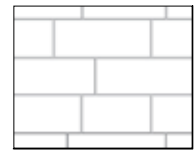


*Veneer with one textured side (corner)

Laying Pattern



Linear
Lafitt Tandem 90



Linear
Lafitt Tandem 180



Technical Information

Product	Lafitt Tandem 90 and 180 Wall
Standard	ASTM C 1372
Flexural Strength	N/A
Compressive Strength	20.7 MPa
De-icing salts freeze-thaw durability	N/A
Density	2000 kg/m ³
Absorption	10.4%
Dimension Tolerance*	Length: ±3.2 mm Width: ±3.2 mm Height: ±3.2 mm

Applications: Retaining wall (by using Tandem 90 structural units and Tandem Next 180 structural units) - Double-sided wall (by using double-sided plastic connector) - Pillars (by using the Tandem Wall Grid Pillar Kit) - Steps (by using Lafitt Plus Step unit)

Recommended Capping units: Lafitt Plus Capping unit

Additional details: See our landscaping installation guide on our website.

Tandem® Wall Accessories

Connectors

	Metric (mm)	Imperial (in.)
	63.5 x 63.5 x 2438	2 1/2 x 2 1/2 x 8
Qty/bag	200 units	200 units
Weight/bag	143 kg	315 lb

Code	Colour
70550961	Grey

Sold by full bag
Non returnable pallet

Corner Connector

	Metric (mm)	Imperial (in.)
	85 x 70	3 3/8 x 2 3/4
Qty/bag	50 units	50 units

Code	Colour
70970616	Black



Sold by full bag - 12 bags per cube
Quantity required per 90° corner: one corner connector per row

Double-Sided Plastic Connector

	Metric (mm)	Imperial (in.)
	85 x 170	3 3/8 x 6 11/16
Qty/bag	50 units	50 units

Code	Colour
70970615	Black

Quantity of connectors required:
Lafitt Tandem 90 and Melville Tandem 90
7 connectors per ft² ⁽¹⁾ - 74 connectors per m² ⁽¹⁾

Lafitt Tandem 180 and Melville Tandem 180
5.5 connectors per ft² ⁽¹⁾ - 57 connectors per m² ⁽¹⁾

⁽¹⁾ Based on one of the two sides of the double-sided wall

Sold by full bag

Recommended for curved walls



8 ft. Shelf Angle

	Metric (mm)	Imperial (in.)
	63.5 x 63.5 x 2438	2 1/2 x 2 1/2 x 8
Qty/package	15 units	15 units
Weight/package	143 kg	315 lb

Code	Colour
34355362	Grey

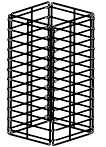


Sold by full package
Non returnable pallet

Grid Pillar Kit

	Metric (mm)	Imperial (in.)
	1067 x 670 x 670	42 x 26 3/8 x 26 3/8
Weight/unit	23 kg	50 lb
Surface of veneer req.	2.60 m ²	28 ft ²
Qty/cube	10 units	10 units
Weight/cube	227 kg	499 lb

Code	Colour
70550661	Silver

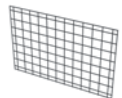


Includes one bag of 200 connectors
Non returnable pallet
Cannot be used with Melville and Lafitt Veneers (180)

Modular Grid Kit

	Metric (mm)	Imperial (in.)
	717 x 1077	28.23 x 42.4
Weight/unit	3.4 kg	7.5 lb
Surface of veneer req.	0.77 m ²	8.31 ft ²
Qty/cube	40 units	40 units
Weight/cube	137 kg	302 lb

Code	Colour
70550550	Silver



Includes one bag of 60 connectors, 10 screws and 10 clamps
Sold by kit
Non returnable pallet

Additional details: See our landscaping installation guide on our website.

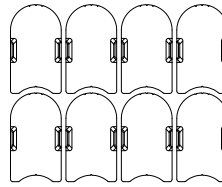
Tandem® Wall Starter Unit

	Metric (mm)	Imperial (in.)
	90 x 268 x 469	3 9/16 x 10 1/2 x 18 1/2
Weight/unit	23 kg	51 lb
Units/length	2.30 units/lin. m	0.70 unit/lin. ft
Qty/cube	56 units	56 units
Weight/cube	1333 kg 7 Rows	2939 lb

Code	Colour
12053584	Grey

Production location	Metcalfe
Can be double stacked	
Sold by piece	

Typical Row



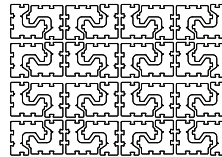
Tandem® Next Wall 180 mm Structural Unit

	Metric (mm)	Imperial (in.)
	180 x 200 x 199	7 1/16 x 7 7/8 x 7 7/8
Weight/unit	9.4 kg	20.58 lb
Area/layer	1.13 m ²	12.16 ft ²
Area/cube	4.52 m ² 4 Rows	48.64 ft ²
Length/row	6.37 lin. m	20.89 lin. ft
Length/cube	25.47 lin. m	83.57 lin. ft
Units/row	32	32
Qty/cube	128 units	128 units
Weight/cube	1316 kg	2901 lb

Code	Colour
16252752	Grey

Production location	Trois-Rivières
4 bags of 37 connectors = 1 bag per row	

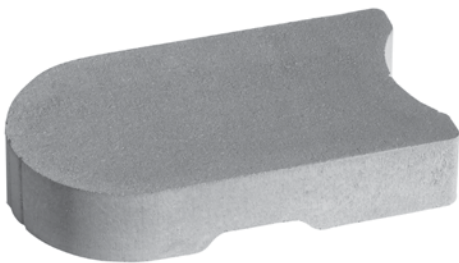
Typical Row



Universal Connector

Code	Colour
70972062	Black

Box of 148 units
 1 box of 4 bags of 37 units
 72 boxes/cube



Technical Information

Product	Tandem Next 180 mm Structural Wall
Standard	ASTM C 1372
Flexural Strength	N/A
Compressive Strength	20.7 MPa
De-icing salts freeze-thaw durability	N/A
Density	2000 kg/m ²
Absorption	10.4%
Dimension Tolerance*	Length: ±3.2 mm Width: ±3.2 mm Height: ±3.2 mm

The Tandem Next Wall system 180 mm Structural Unit may be used with the 180 mm Melville and Lafitt Veneer Units for retaining wall applications. Additional details: See our landscaping installation guide on our website.

Tandem® Wall 90 mm Structural Unit

	Metric (mm)	Imperial (in.)
A	90 x 155 x 201	3 9/16 x 6 1/8 x 7 7/8
B	90 x 155 x 268	3 9/16 x 6 1/8 x 10 1/2
C	90 x 155 x 335	3 9/16 x 6 1/8 x 13 3/16
D	90 x 155 x 402	3 9/16 x 6 1/8 x 15 13/16
Weight/unit (avg.)	23 kg	51 lb
Area/layer	0.65 m ²	7.02 ft ²
Area/cube	3.91 m ² 6 Rows	42.12 ft ²
Qty/cube	A = 36 B = 36 C = 36 D = 36	
Length/row (1 to 5)	7.24 lin. m	23.75 lin. ft
Length/cube	43.44 lin. m	142.50 lin. ft
Weight/cube	1230 kg	2711 lb

Code	Colour
16259063	Grey

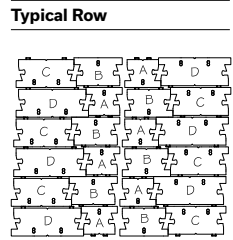
Production location Trois-Rivières

For each structural unit, 1 alignment pin is included

A set of 4 units = 1.17 ft²

Can be double stacked

Sold in full cubes



Technical Information	
Product	Tandem Structural 90 mm Wall
Standard	ASTM C 1372
Flexural Strength	N/A
Compressive Strength	20.7 MPa
De-icing salts freeze-thaw durability	N/A
Density	2000 kg/m ²
Absorption	10.4%
Dimension Tolerance*	Length: ±3.2 mm Width: ±3.2 mm Height: ±3.2 mm

The Tandem Structural units must be used with the Melville and Lafitt 90 Veneer units for retaining wall applications. Additional details specific to this product are available by consulting our landscaping installation guide on our website.